

Decking & Cladding Collections



norx[®]



At the leading edge of outdoor living

With durable and sustainable outdoor solutions designed for every space and style, we're leading the way in composite and PVC decking, cladding, and beyond.





>
**Superior
feel**

Vibrant, revolutionary,
and ever-changing,
Norx[®] introduces
trailblazing solutions,
such as our exclusive
Elastic Surface[™] that
creates a feel like
no other.

>
Breathable

Norx[®] products are
carefully designed to
allow air to flow easily
between siding and
joists, ensuring your
home stays dry.



> **All season**

Resilient to the core, **Norx**® products are built to thrive in different environments and the most demanding weather conditions.



> **High tech,
high touch**

Norx® products are made with cutting-edge technology and are always designed to bring people together. They are the future of outdoor living.



> **Enhanced
durability**

Encased in carefully crafted armor, **Norx**® products redefine the meaning of high performance. Our products require little to no maintenance and have made moisture intrusion, weathering, and fading a thing of the past.

The difference is in the details

Our outdoor solutions look like natural wood but offer strength, longevity, and sustainability you can only find with thoughtfully engineered materials.

SAFETY FIRST



No warping
or splintering



Slip-resistant
walking surface



Anti-microbial



Fire resistant

HIGH RESISTANCE

50

Up to 50-year
warranty



Scratch resistant



Stain resistant



Rich, vibrant
color for years



Waterproof

USER & ECO FRIENDLY



Up to 95%
recycled material



Easy installation



Long lifespan



Low maintenance

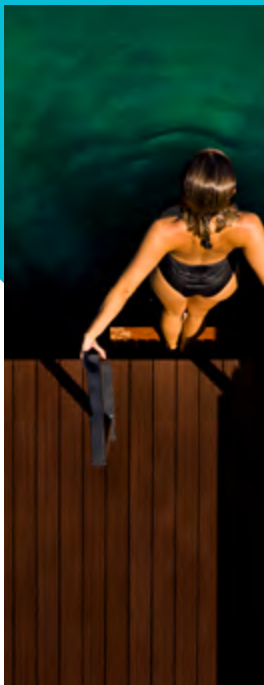


Table of Contents

DESIGNER SERIES
COMPOSITE

The **Paris**
Collection

12



The **Rio**
Collection

18



PERFORMANCE
SERIES PVC

The
Barcelona
Collection

24



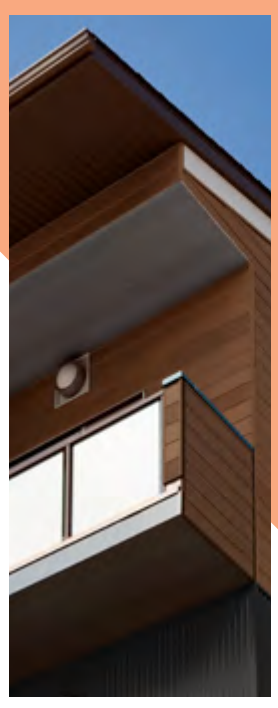
DECKING

CLADDING

DESIGNER SERIES
COMPOSITE

The
Los Angeles
Collection

32



The
New York
Collection

38



The
London
Collection

44



The
Rome
Collection

50





Decking

Supported by durable strength and built with precise accuracy, **Norx**® provides two distinct series made of two different materials: composite and PVC.

With elements as strong as these, you'll never go wrong with our state-of-the-art deck lines.





DESIGNER SERIES
COMPOSITE

The **Paris** Collection

A sensory experience
like no other

With the exclusive Elastic Surface™ technology, the **Paris Collection** takes composite decking to a whole new level. Designed for a barefoot experience and completely safe for children and pets, it's like nothing you've ever laid your hands — or feet — on.





The **Paris** Collection

COLOR CHOICES



All colors shown are for reference only.

TECHNICAL DETAILS

- > Comes in 12- and 16-foot boards
 - 23mm x 140mm x 365cm (0.9in x 5.5in x 12ft)
 - 23mm x 140mm x 487cm (0.9in x 5.5in x 16ft)
- > Capped on all 4 sides
- > Anti-static finish available upon request
- > 1 profile and 2 surface designs

- DENSITY** 1.3g/cm³ (Standard: ASTM D792-13 Method B)
- TENSILE STRENGTH** 24.9Mpa (Standard: ASTM D638-14)
- FLEXURAL STRENGTH** 34.5Mp (Standard: ASTM D790-10)
- FLEXURAL MODULUS** 3510Mpa (Standard: ASTM D790-10)
- IMPACT STRENGTH** 88J/m (Standard: ASTM D4812-11)
- SHORE HARDNESS** D70 (Standard: ASTM D2240-05)
- WATER ABSORPTION** 0.63% (Standard: ASTM D570-98)
- THERMAL EXPANSION** 33.12 x 10⁻⁶ (Standard: ASTM D696-08)
- SLIP RESISTANCE** R11 (Standard: DIN 51130:2014)



Anti-static coating available



Reversible boards



Waterproof



95% recycled wood and plastic



Elastic Surface™

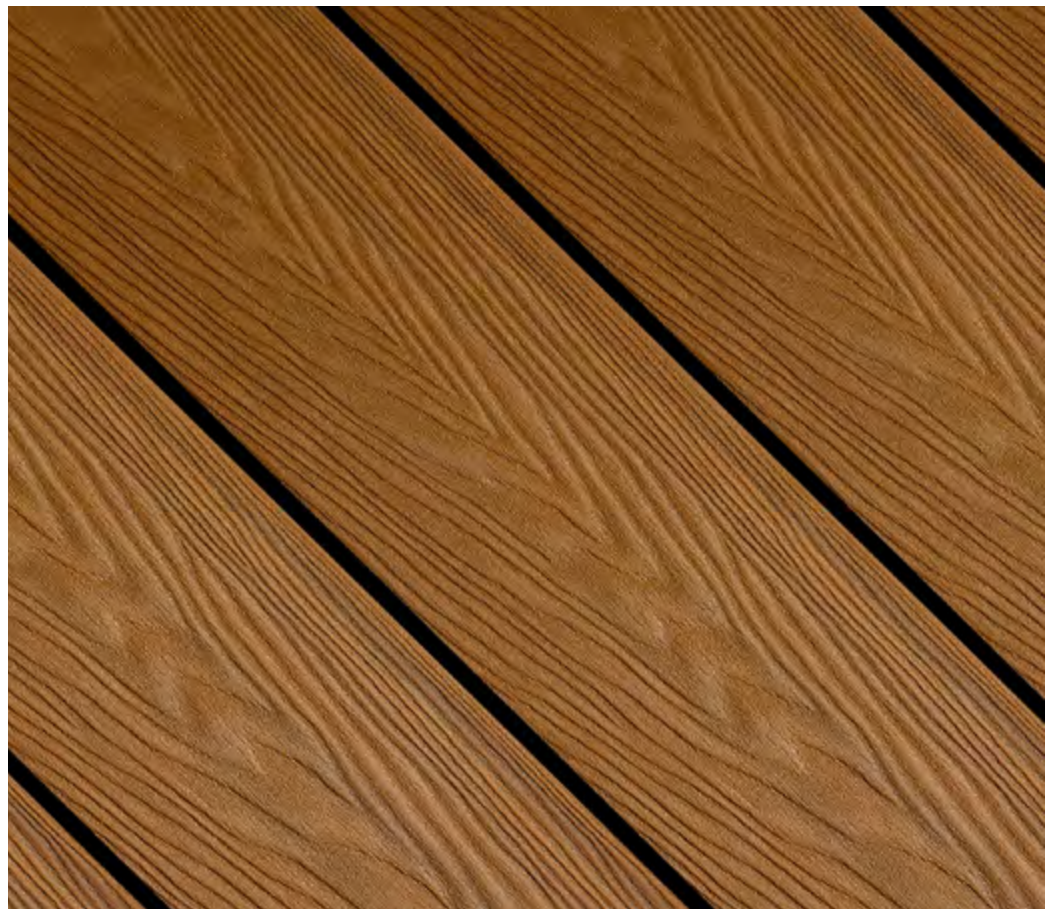


Temperature controlled



Long lifespan





DECKING

DESIGNER SERIES
COMPOSITE

The **Rio** Collection

Beauty meets toughness

Built with durability in mind, the **Rio Collection** is ready for any challenge everyday life brings. Designed with our exclusive GroundGuard™, it takes moisture, weathering, and insects out of the picture so you can focus on enjoying the deck of your dreams.





The Rio Collection

COLOR CHOICES



All colors shown are for reference only.

TECHNICAL DETAILS

- > Comes in 12-, 16-, and 20-foot boards
 - 23mm x 140mm x 365cm (0.9in x 5.5in x 12ft)
 - 23mm x 140mm x 487cm (0.9in x 5.5in x 16ft)
 - 23mm x 140mm x 610cm (0.9in x 5.5in x 20ft)
- > Capped on 3 sides
- > Strengthened core material
- > 1 profile and 1 surface design

- DENSITY** 1.3g/cm³ (Standard: ASTM D792-13 Method B)
- TENSILE STRENGTH** 24.9Mpa (Standard: ASTM D638-14)
- FLEXURAL STRENGTH** 34.5Mp (Standard: ASTM D790-10)
- FLEXURAL MODULUS** 3510Mpa (Standard: ASTM D790-10)
- IMPACT STRENGTH** 88J/m (Standard: ASTM D4812-11)
- SHORE HARDNESS** D70 (Standard: ASTM D2240-05)
- WATER ABSORPTION** 0.63% (Standard: ASTM D570-98)
- THERMAL EXPANSION** 33.12 x 10⁻⁶ (Standard: ASTM D696-08)
- SLIP RESISTANCE** R11 (Standard: DIN 51130:2014)





**Color variation
on every board**



**Ground
Guard™**



Waterproof



**95% recycled
wood and plastic**





DECKING

PERFORMANCE SERIES
PVC

The **Barcelona** Collection

Sleek design paired with
unparalleled strength

Well above industry standards, Barcelona's cutting-edge PVC boards are crafted with incredible precision and impeccably designed. Comprised of some of the world's best decking material, Barcelona is as resilient as the city it is named after.





The **Barcelona** Collection

COLOR CHOICES

La Rambla (Light Gray)



Casa Mila (Light Brown)



All colors shown are for reference only.

TECHNICAL DETAILS

- > Superior capped polymer boards
- > Comes in 12-, 16-, and 20-foot boards
- > Brushed and wood grain finishes
- > Highly color blended

WET PENDULUM

Class P5 (Standard: AS 4586-2013 Appendix A)

OIL-WET INCLINING PLATFORM

Class R13 (Standard: AS 4586-2013 Appendix D)

THERMAL EXPANSION

42.4×10^{-6} (Standard: ASTM D696-16)

TENSILE

Strength: 17.8Mpa/Modulus: 5075Mpa (Standard: ASTM D638-14)

COMPRESSIVE

Strength: 29.8Mpa/Modulus: 27.2Mpa (Standard: ASTM D695-15)

SHEAR STRENGTH

26.2Mpa (Standard: ASTM D732-17)





 **Waterproof**

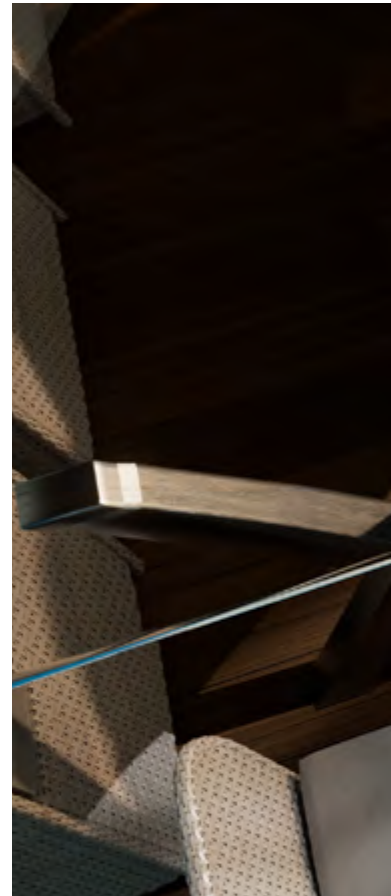
 **Long lifespan**

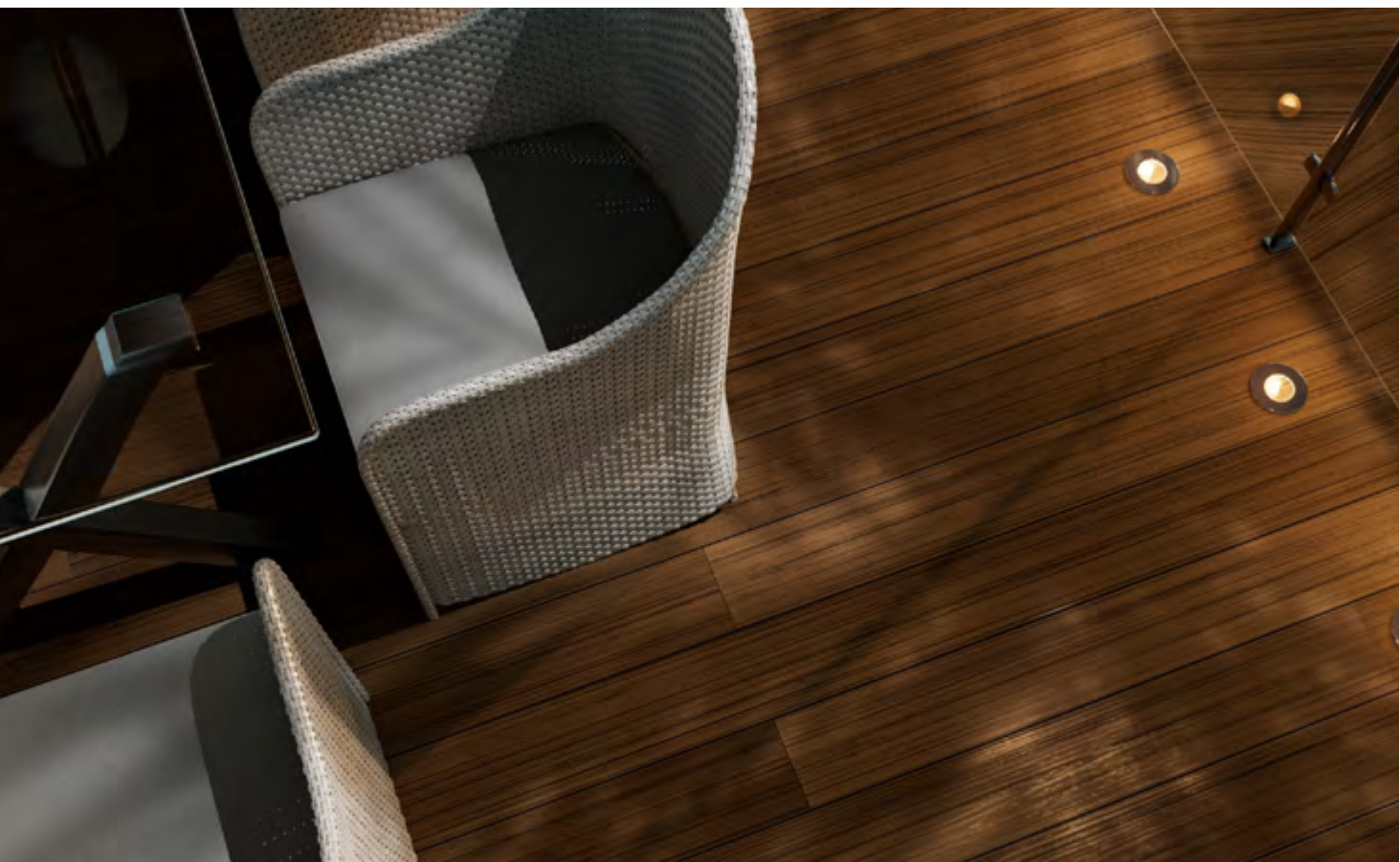
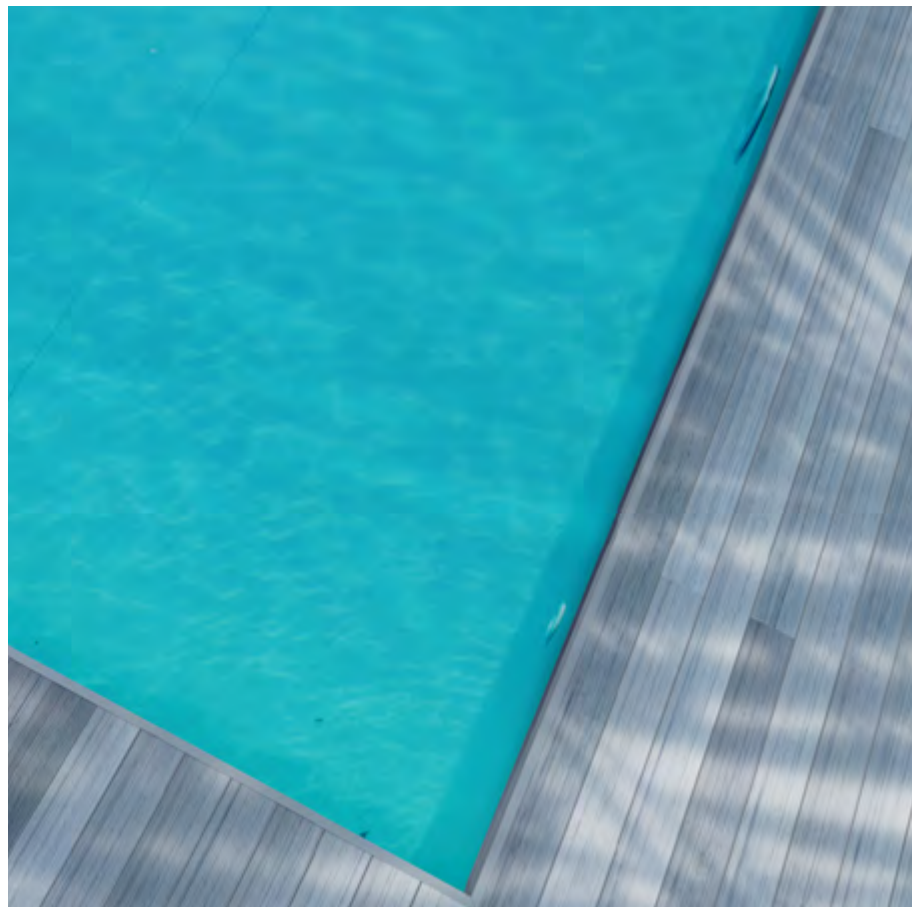
 **Low moulding shrinkage**

 **Resistant to environmental stress cracking**

 **Reversible boards**

 **Color variation on every board**







Cladding

With designs ranging from classic and cozy to ultra-modern, **Norx**® allows you to enhance the looks of any space while protecting it from harsh weather conditions.

Our collections are inspired by some of the world's most incredible living spaces.



> CLADDING

DESIGNER SERIES
COMPOSITE

The Los Angeles Collection

Cozy yet cosmopolitan

It's about time classic North American cladding met cutting-edge technology.

With a strong protective shield on the outside,

Los Angeles has withstood the test of time by resisting the challenges of everyday life.





The **Los Angeles** Collection

COLOR CHOICES

All colors shown are for reference only.

Santa Monica (Dark Brown)



Hollywood (Light Brown)



Venice (Dark Gray)



TECHNICAL DETAILS

- > Capped using ultra-high-strength material 1/2" x 6" (12 x 140mm)
- > Comes in 16-foot boards
- > Increased scratch resistance
- > Protected against mildew and stains

DENSITY 1.3g/cm³ (Standard: ASTM D792-13 Method B)
TENSILE STRENGTH 24.9Mpa (Standard: ASTM D638-14)
FLEXURAL STRENGTH 34.5Mp (Standard: ASTM D790-10)
FLEXURAL MODULUS 3510Mpa (Standard: ASTM D790-10)
IMPACT STRENGTH 88J/m (Standard: ASTM D4812-11)
SHORE HARDNESS D70 (Standard: ASTM D2240-05)
WATER ABSORPTION 0.63% (Standard: ASTM D570-98)
THERMAL EXPANSION 33.12 x 10⁻⁶ (Standard: ASTM D696-08)
SLIP RESISTANCE R11 (Standard: DIN 51130:2014)





**Long
lifespan**



**95% recycled
wood and plastic**



Waterproof



**Color variation
on every board**



Anti-microbial



CLADDING | DESIGNER SERIES | COMPOSITE | THE LOS ANGELES COLLECTION



> CLADDING

DESIGNER SERIES
COMPOSITE

The New York Collection

The thinner, the stronger

This collection is a superb display of textures and sensations, combined with a classic design and superior technology that is at the core of everything **New York** has to offer.

With a durable coating that diverts water and adds to the aesthetic, this collection controls humidity in any space in both an efficient and an environmentally friendly way.





The **New York** Collection

COLOR CHOICES

All colors shown are for reference only.

Empire State (Dark Brown)



Brooklyn (Light Brown)



Rockefeller (Dark Gray)



TECHNICAL DETAILS

- > Capped using ultra-high-strength material 1" x 6" (21 x 156mm)
- > Comes in 16-foot boards
- > Increased scratch resistance
- > Protected against mildew and stains

- DENSITY** 1.3g/cm³ (Standard: ASTM D792-13 Method B)
- TENSILE STRENGTH** 24.9Mpa (Standard: ASTM D638-14)
- FLEXURAL STRENGTH** 34.5Mp (Standard: ASTM D790-10)
- FLEXURAL MODULUS** 3510Mpa (Standard: ASTM D790-10)
- IMPACT STRENGTH** 88J/m (Standard: ASTM D4812-11)
- SHORE HARDNESS** D70 (Standard: ASTM D2240-05)
- WATER ABSORPTION** 0.63% (Standard: ASTM D570-98)
- THERMAL EXPANSION** 33.12 x 10⁻⁶ (Standard: ASTM D696-08)
- SLIP RESISTANCE** R11 (Standard: DIN 51130:2014)



Anti-microbial



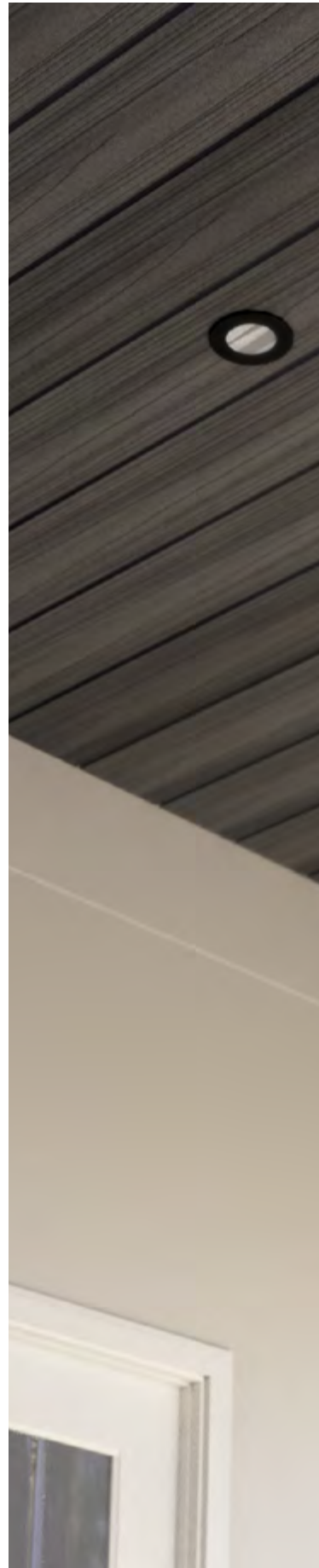
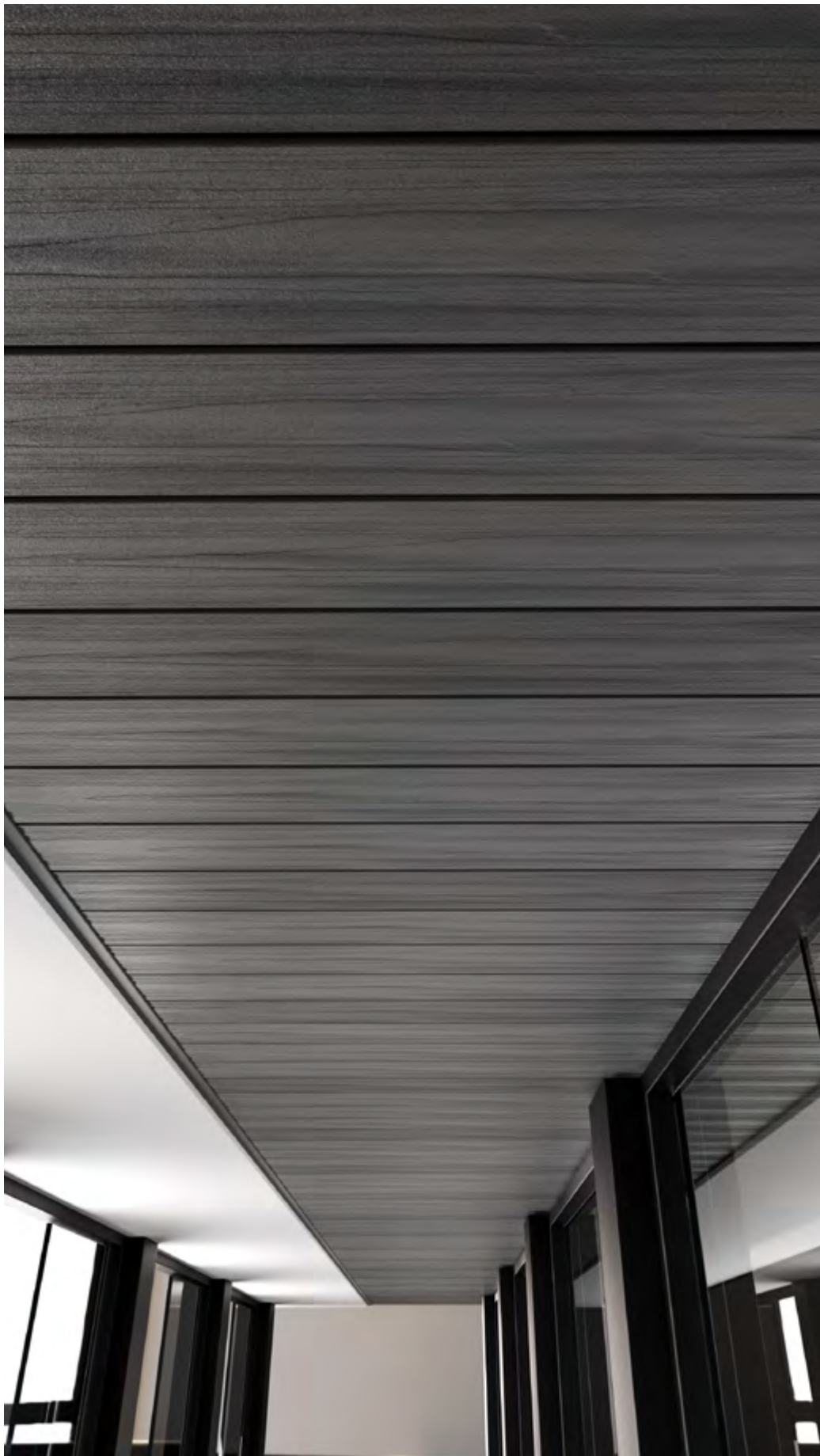
**95% recycled
wood and plastic**



Waterproof



**Color variation
on every board**



CLADDING | DESIGNER SERIES | COMPOSITE | THE NEW YORK COLLECTION



> CLADDING

DESIGNER SERIES
COMPOSITE

The London Collection

Modern living updated

London has several personalities contained in one collection. Posh, ageless, and unforgettable, it's perfectly designed to serve as a melting pot where plenty of cultural elements are mixed and combined, typically seen in the majestic and glittering metropolis.

The **London** is the ideal cladding option to elevate the performance of your space by providing a sense of urbanity and superior finish, mixed with a sophisticated performance in long-lasting, nature-inspired tones. This cladding is perfect for external facades, screenings, or ceilings.





The **London** Collection

COLOR CHOICES



All colors shown are for reference only.

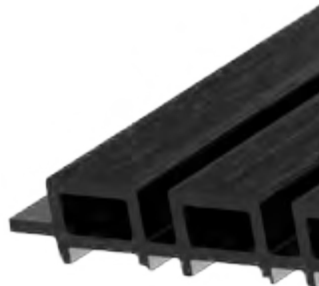
TECHNICAL DETAILS

- > Capped using ultra-high-strength material 1" x 8" (26 x 219)
- > Comes in 16-foot boards
- > Increased scratch resistance
- > Protected against mildew and stains

DENSITY 1.3g/cm³ (Standard: ASTM D792-13 Method B)
TENSILE STRENGTH 24.9Mpa (Standard: ASTM D638-14)
FLEXURAL STRENGTH 34.5Mp (Standard: ASTM D790-10)
FLEXURAL MODULUS 3510Mpa (Standard: ASTM D790-10)
IMPACT STRENGTH 88J/m (Standard: ASTM D4812-11)
SHORE HARDNESS D70 (Standard: ASTM D2240-05)
WATER ABSORPTION 0.63% (Standard: ASTM D570-98)
THERMAL EXPANSION 33.12 x 10⁻⁶ (Standard: ASTM D696-08)
SLIP RESISTANCE R11 (Standard: DIN 51130:2014)



Wide slats





 **Waterproof**

 **95% recycled wood and plastic**

 **Color variation on every board**

 **Anti-microbial**



CLADDING | DESIGNER SERIES | COMPOSITE | THE LONDON COLLECTION



> CLADDING

DESIGNER SERIES
COMPOSITE

The Rome Collection

Unparalleled beauty

These parallel battens result in unparalleled beauty. This collection is an alluring alternative for creating a contemporary facade on homes, commercial offices, or any space.

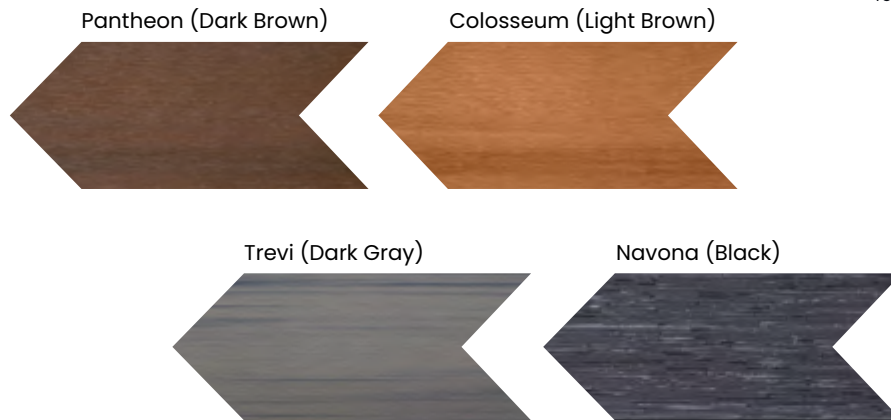
The **Rome Collection** not only lives up to its name for its strength and endurance but also for the weight of its reputation. After all, we are talking about the cradle of civilization and its never-ending promise of glory.





The Rome Collection

COLOR CHOICES



All colors shown are for reference only.

TECHNICAL DETAILS

- > Capped using ultra-high-strength materials 1" x 7" (26 x 176mm)
- > Comes in 16-foot boards
- > Increased scratch resistance
- > Protected against mildew and stains

DENSITY 1.3g/cm³ (Standard: ASTM D792-13 Method B)

TENSILE STRENGTH 24.9Mpa (Standard: ASTM D638-14)

FLEXURAL STRENGTH 34.5Mp (Standard: ASTM D790-10)

FLEXURAL MODULUS 3510Mpa (Standard: ASTM D790-10)

IMPACT STRENGTH 88J/m (Standard: ASTM D4812-11)

SHORE HARDNESS D70 (Standard: ASTM D2240-05)

WATER ABSORPTION 0.63% (Standard: ASTM D570-98)

THERMAL EXPANSION 33.12 x 10⁻⁶ (Standard: ASTM D696-08)

SLIP RESISTANCE R11 (Standard: DIN 51130:2014)



Narrow slats



**Color variation
on every board**



**95% recycled
wood and plastic**



Waterproof



Anti-microbial



CLADDING | DESIGNER SERIES | COMPOSITE | THE ROME COLLECTION



norx[®]

Dive into the
NORX[®] XPERIENCE
at **NORX.US**

