

# Decking & Cladding Collections



**norx**<sup>®</sup>





# At the leading edge of outdoor living

With durable and sustainable outdoor solutions designed for every space and style, we're leading the way in composite and PVC decking, cladding, and beyond.







> Superior  
feel

Vibrant, revolutionary, and ever-changing, **Norx**® introduces trailblazing solutions, such as our exclusive Elastic Surface™ that creates a feel like no other.



> Breathable

**Norx**® products are carefully designed to allow air to flow easily between siding and joists, ensuring your home stays dry.



> All season

Resilient to the core, **Norx**® products are built to thrive in different environments and the most demanding weather conditions.



> High tech,  
high touch

**Norx**® products are made with cutting-edge technology and are always designed to bring people together. They are the future of outdoor living.



> Enhanced  
durability

Encased in carefully crafted armor, **Norx**® products redefine the meaning of high performance. Our products require little to no maintenance and have made moisture intrusion, weathering, and fading a thing of the past.

# The difference is in the details

Our outdoor solutions look like natural wood but offer strength, longevity, and sustainability you can only find with thoughtfully engineered materials.

## SAFETY FIRST



No warping or splintering



Slip-resistant walking surface



Anti-microbial

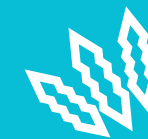


Fire resistant

## HIGH RESISTANCE



Up to 50-year warranty



Scratch resistant



Stain resistant



Rich, vibrant color for years



Waterproof

## USER & ECO FRIENDLY



Up to 95% recycled material



Easy installation



Long lifespan



Low maintenance





# Table of Contents

DESIGNER SERIES  
COMPOSITE

PERFORMANCE  
SERIES PVC

The **Paris**  
Collection

The **Rio**  
Collection

The  
**Barcelona**  
Collection

12

18

24

DESIGNER SERIES  
COMPOSITE

The  
**Los Angeles**  
Collection

The  
**New York**  
Collection

The  
**London**  
Collection

The  
**Rome**  
Collection

32

38

44

50

DECKING



CLADDING





# Decking

Supported by durable strength and built with precise accuracy, **Norx**® provides two distinct series made of two different materials: composite and PVC.

With elements as strong as these, you'll never go wrong with our state-of-the-art deck lines.





## > DECKING

DESIGNER SERIES  
COMPOSITE

# The **Paris** Collection

A sensory experience  
like no other

With the exclusive Elastic Surface™ technology,  
the **Paris Collection** takes composite decking  
to a whole new level. Designed for a barefoot  
experience and completely safe for children  
and pets, it's like nothing you've ever laid  
your hands — or feet — on.



# The Paris Collection

## COLOR CHOICES



All colors shown are for reference only.

## TECHNICAL DETAILS

- > Comes in 12- and 16-foot boards
  - 23mm x 140mm x 365cm (0.9in x 5.5in x 12ft)
  - 23mm x 140mm x 487cm (0.9in x 5.5in x 16ft)
- > Capped on all 4 sides
- > Anti-static finish available upon request
- > 1 profile and 2 surface designs

**DENSITY** 1.3g/m<sup>3</sup> (Standard: ASTM D792-13 Method B)

**TENSILE STRENGTH** 25.8Mpa (Standard: ASTM D638-14)

**FLEXURAL STRENGTH** 36.4Mp (Standard: ASTM D790-10)

**FLEXURAL MODULUS** 3680Mpa (Standard: ASTM D790-10)

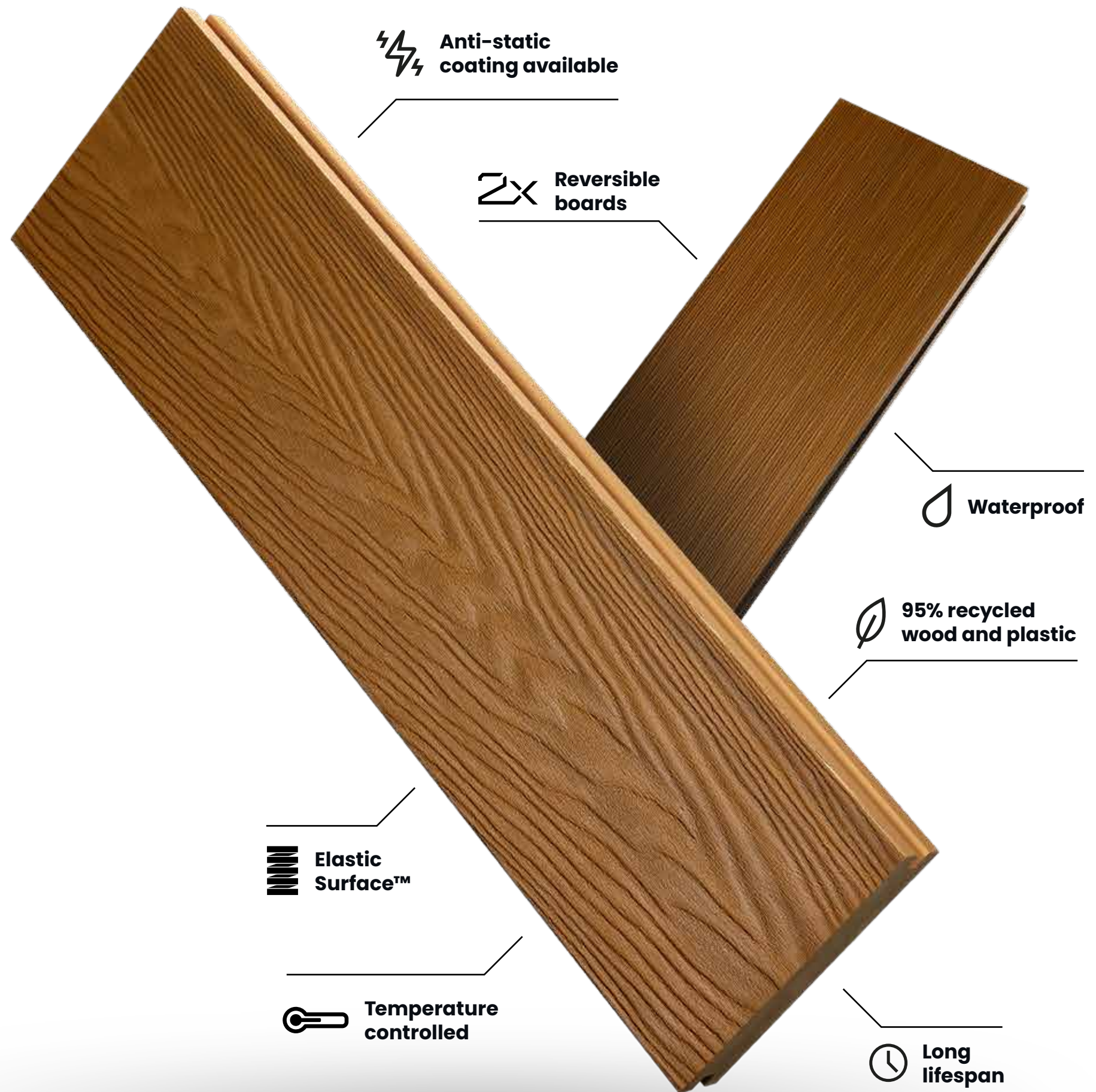
**IMPACT STRENGTH** 88.46/m (Standard: ASTM D4812-11)

**SHORE HARDNESS** D65 (Standard: ASTM D2240-05)

**WATER ABSORPTION** 0.59% (Standard: ASTM D570-98)

**THERMAL EXPANSION** 32.08 x 10<sup>-6</sup> (Standard: ASTM D696-08)

**SLIP RESISTANCE** R11 (Standard: DIN 51130:2014)









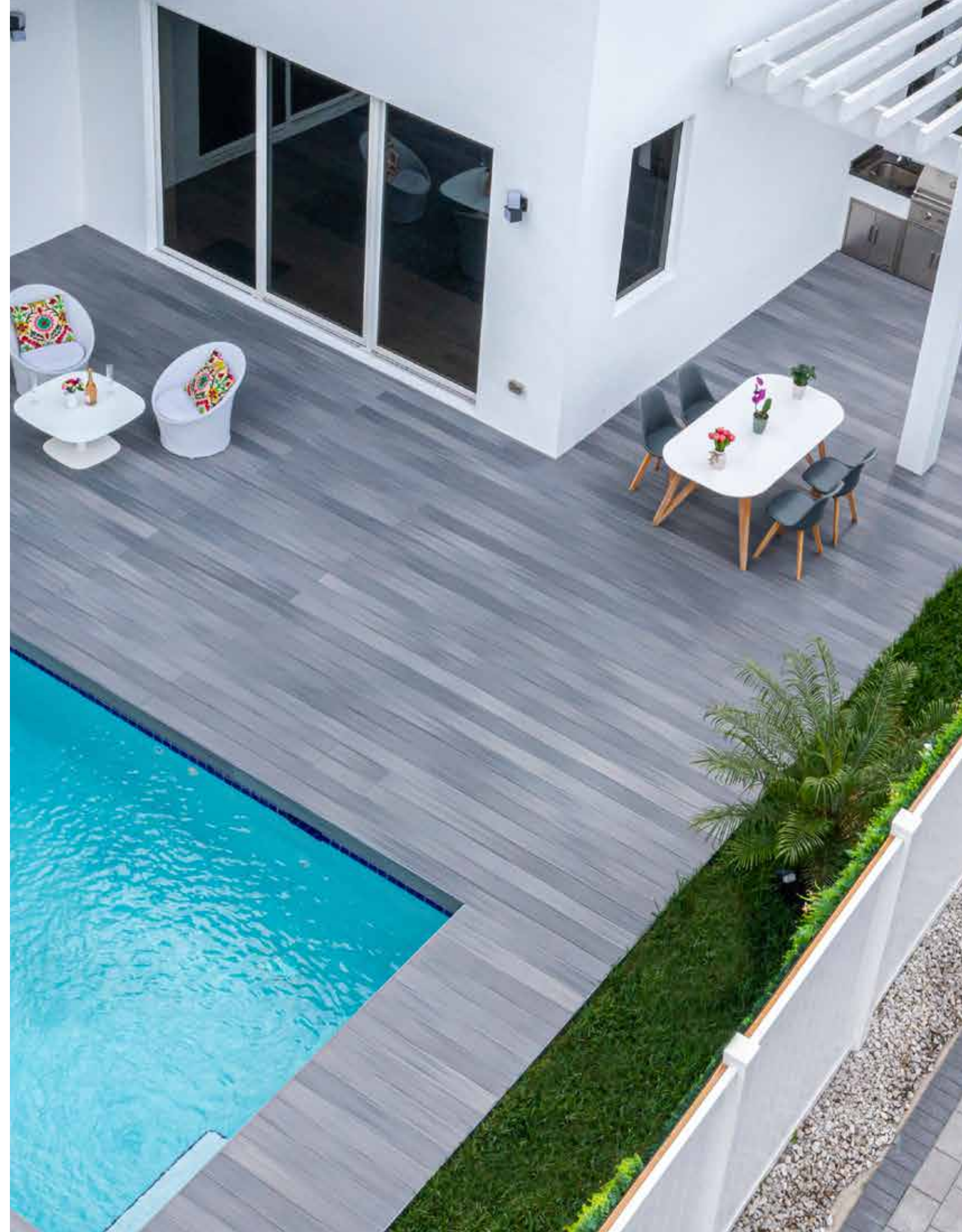
## DECKING

DESIGNER SERIES  
COMPOSITE

# The **Rio** Collection

### Beauty meets toughness

Built with durability in mind, the **Rio Collection** is ready for any challenge everyday life brings. Designed with our exclusive GroundGuard™, it takes moisture, weathering, and insects out of the picture so you can focus on enjoying the deck of your dreams.





# The Rio Collection

## COLOR CHOICES

All colors shown are for reference only.



## TECHNICAL DETAILS

- > Comes in 12-, 16-, and 20-foot boards
  - 23mm x 140mm x 365cm (0.9in x 5.5in x 12ft)
  - 23mm x 140mm x 487cm (0.9in x 5.5in x 16ft)
  - 23mm x 140mm x 610cm (0.9in x 5.5in x 20ft)
- > Capped on 3 sides
- > Strengthened core material
- > 1 profile and 1 surface design

- DENSITY** 1.3g/m<sup>3</sup> (Standard: ASTM D792-13 Method B)
- TENSILE STRENGTH** 24.9Mpa (Standard: ASTM D638-14)
- FLEXURAL STRENGTH** 34.5Mp (Standard: ASTM D790-10)
- FLEXURAL MODULUS** 3510Mpa (Standard: ASTM D790-10)
- IMPACT STRENGTH** 88J/m (Standard: ASTM D4812-11)
- SHORE HARDNESS** D70 (Standard: ASTM D2240-05)
- WATER ABSORPTION** 0.63% (Standard: ASTM D570-98)
- THERMAL EXPANSION** 33.12 x 10<sup>-6</sup> (Standard: ASTM D696-08)
- SLIP RESISTANCE** R11 (STANDARD: DIN 51130:2014)

 **Long lifespan**

 **Color variation on every board**

 **Ground Guard™**

 **Waterproof**

 **95% recycled wood and plastic**









PERFORMANCE SERIES  
PVC

# The Barcelona Collection

Sleek design paired with  
unparalleled strength

Well above industry standards, Barcelona's cutting-edge PVC boards are crafted with incredible precision and impeccably designed. Comprised of some of the world's best decking material, Barcelona is as resilient as the city it is named after.





# The Barcelona Collection

## COLOR CHOICES

La Rambla (Light Gray)



Casa Mila (Light Brown)



All colors shown are for reference only.

## TECHNICAL DETAILS

- > Superior capped polymer boards
- > Comes in 12-, 16-, and 20-foot boards
- > Brushed and wood grain finishes
- > Highly color blended

### WET PENDULUM

Class P5 (Standard: AS 4586-2013 Appendix A)

### OIL-WET INCLINING PLATFORM

Class R13 (Standard: AS 4586-2013 Appendix D)

### THERMAL EXPANSION

42.4x10<sup>-6</sup> (Standard: ASTM D696-16)

### TENSILE

Strength: 17.8Mpa/Modulus: 5075Mpa (Standard: ASTM D638-14)

### COMPRESSIVE

Strength: 29.8Mpa/Modulus: 27.2Mpa (Standard: ASTM D695-15)

### SHEAR STRENGTH

26.2Mpa (Standard: ASTM D732-17)



Waterproof

Long lifespan

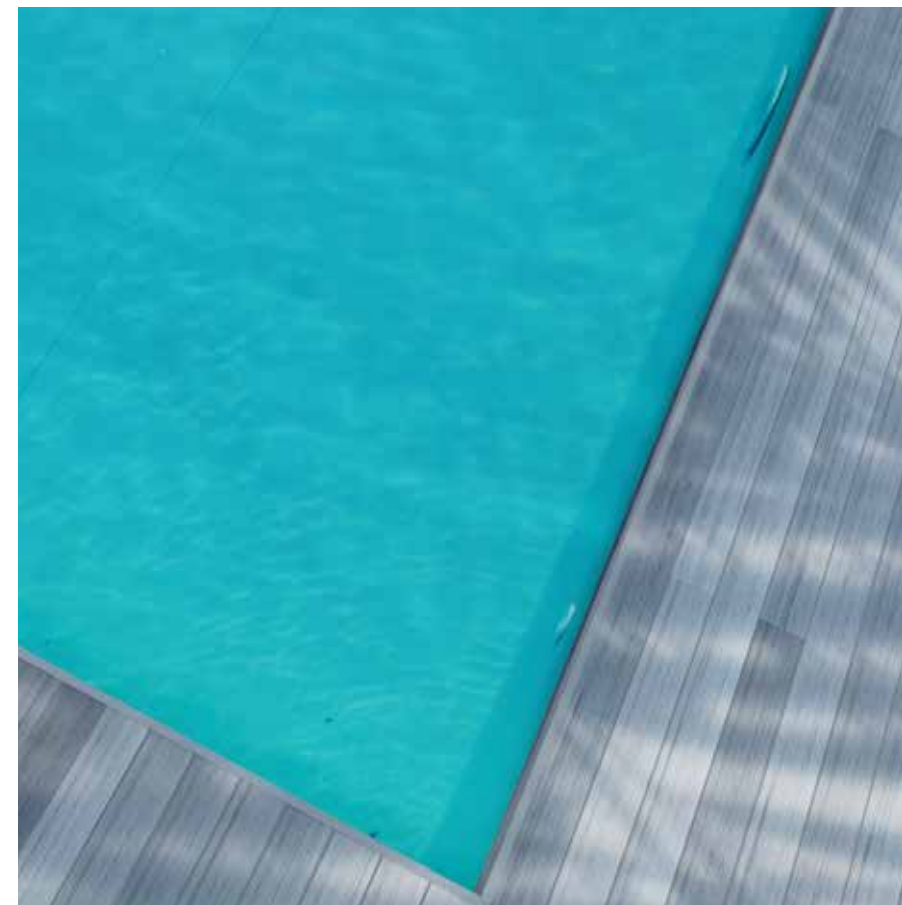
Low moulding shrinkage

Resistant to environmental stress cracking

Reversible boards

Color variation on every board









# Cladding

With designs ranging from classic and cozy to ultra-modern, **Norx**® allows you to enhance the looks of any space while protecting it from harsh weather conditions.

Our collections are inspired by some of the world's most incredible living spaces.





## > CLADDING

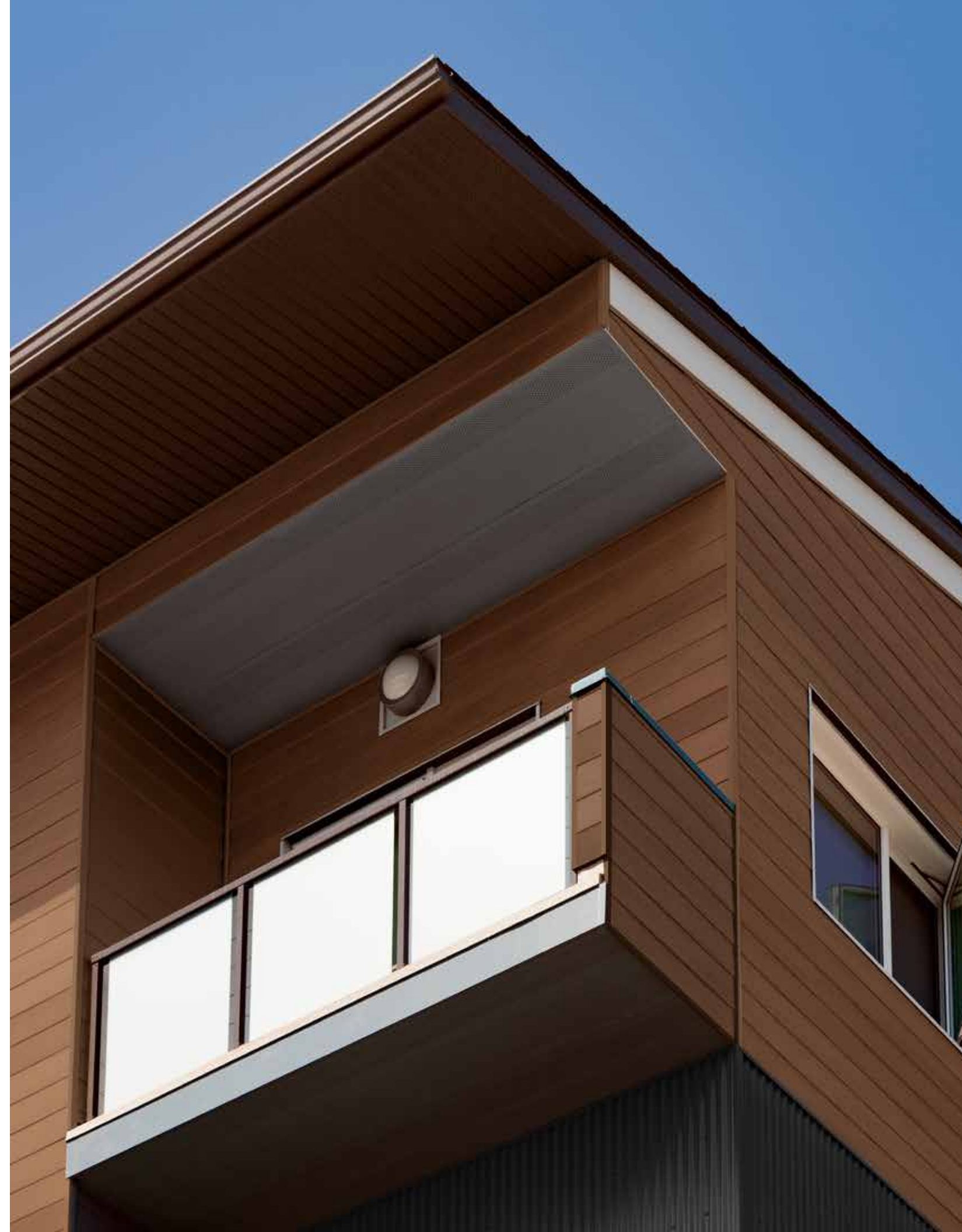
DESIGNER SERIES  
COMPOSITE

# The Los Angeles Collection

### Cozy yet cosmopolitan

It's about time classic North American cladding met cutting-edge technology.

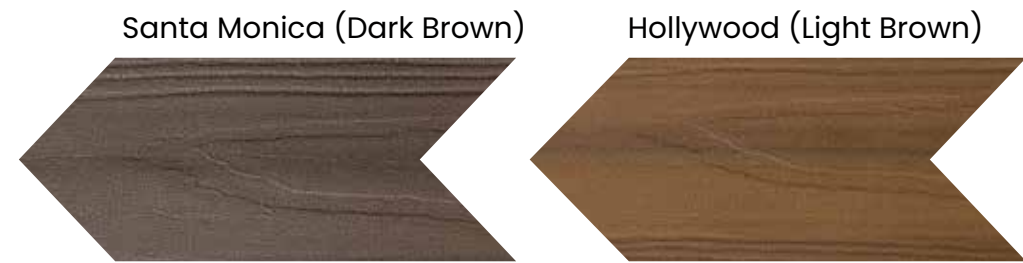
With a strong protective shield on the outside, **Los Angeles** has withstood the test of time by resisting the challenges of everyday life.





# The Los Angeles Collection

## COLOR CHOICES

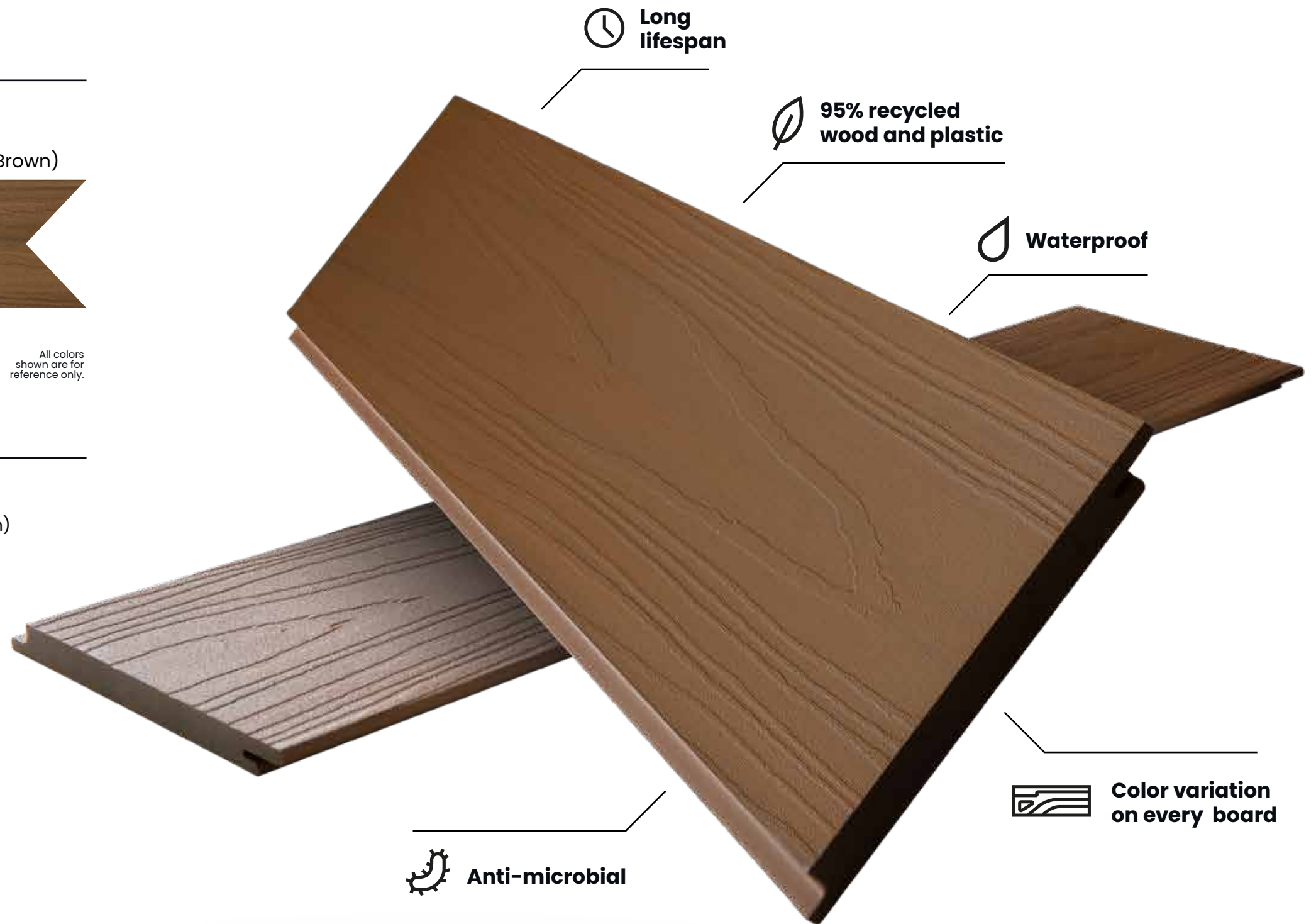


All colors shown are for reference only.

## TECHNICAL DETAILS

- > Capped using ultra-high-strength material 1/2" x 6" (12 x 140mm)
- > Comes in 16-foot boards
- > Increased scratch resistance
- > Protected against mildew and stains

**DENSITY** 1.3g/m<sup>3</sup> (Standard: ASTM D792-13 Method B)  
**TENSILE STRENGTH** 24.9Mpa (Standard: ASTM D638-14)  
**FLEXURAL STRENGTH** 34.5Mp (Standard: ASTM D790-10)  
**FLEXURAL MODULUS** 3510Mpa (Standard: ASTM D790-10)  
**IMPACT STRENGTH** 88J/m (Standard: ASTM D4812-11)  
**SHORE HARDNESS** D70 (Standard: ASTM D2240-05)  
**WATER ABSORPTION** 0.63% (Standard: ASTM D570-98)  
**THERMAL EXPANSION** 33.12 x10<sup>-6</sup> (Standard: ASTM D696-08)  
**SLIP RESISTANCE** R11 (Standard: DIN 51130:2014)









# > CLADDING

DESIGNER SERIES  
COMPOSITE

# The New York Collection

## The thinner, the stronger

This collection is a superb display of textures and sensations, combined with a classic design and superior technology that is at the core of everything **New York** has to offer.

With a durable coating that diverts water and adds to the aesthetic, this collection controls humidity in any space in both an efficient and environmentally friendly way.





# The **New York** Collection

## COLOR CHOICES

Empire State (Dark Brown)



Brooklyn (Light Brown)



All colors shown are for reference only.

## TECHNICAL DETAILS

- > Capped using ultra-high-strength material 1" x 6" (21 x 156mm)
- > Comes in 16-foot boards
- > Increased scratch resistance
- > Protected against mildew and stains

**DENSITY** 1.3g/m<sup>3</sup> (Standard: ASTM D792-13 Method B)

**TENSILE STRENGTH** 24.9Mpa (Standard: ASTM D638-14)

**FLEXURAL STRENGTH** 34.5Mp (Standard: ASTM D790-10)

**FLEXURAL MODULUS** 3510Mpa (Standard: ASTM D790-10)

**IMPACT STRENGTH** 88J/m (Standard: ASTM D4812-11)

**SHORE HARDNESS** D70 (Standard: ASTM D2240-05)

**WATER ABSORPTION** 0.63% (Standard: ASTM D570-98)

**THERMAL EXPANSION** 33.12 x10<sup>-6</sup> (Standard: ASTM D696-08)

**SLIP RESISTANCE** R11 (Standard: DIN 51130:2014)



**Anti-microbial**



**95% recycled wood and plastic**



**Waterproof**



**Color variation on every board**







## > CLADDING

DESIGNER SERIES  
COMPOSITE

# The London Collection

## Modern living updated

**London** has several personalities contained in one collection. Posh, ageless, and unforgettable, it's perfectly designed to serve as a melting pot where plenty of cultural elements are mixed and combined, typically seen in the majestic and glittering metropolis.

The **London** is the ideal cladding option to elevate the performance of your space by providing a sense of urbanity and superior finish, mixed with a sophisticated performance in long-lasting, nature-inspired tones. This cladding is perfect for external facades, screenings, or ceilings.





# The London Collection

## COLOR CHOICES

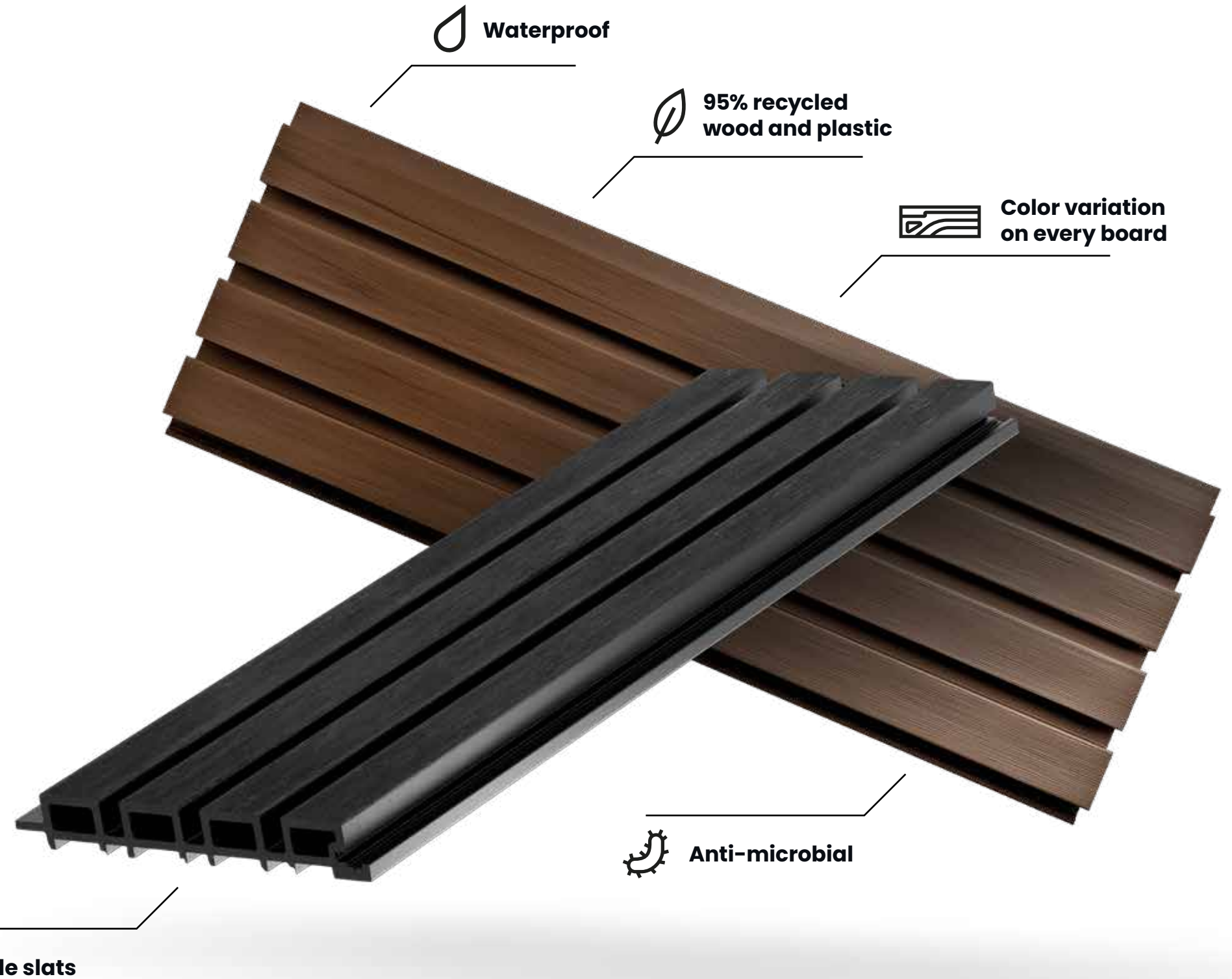


All colors shown are for reference only.

## TECHNICAL DETAILS

- > Capped using ultra-high-strength material 1" x 8" (26 x 219)
- > Comes in 16-foot boards
- > Increased scratch resistance
- > Protected against mildew and stains

**DENSITY** 1.3g/m<sup>3</sup> (Standard: ASTM D792-13 Method B)  
**TENSILE STRENGTH** 24.9Mpa (Standard: ASTM D638-14)  
**FLEXURAL STRENGTH** 34.5Mp (Standard: ASTM D790-10)  
**FLEXURAL MODULUS** 3510Mpa (Standard: ASTM D790-10)  
**IMPACT STRENGTH** 88J/m (Standard: ASTM D4812-11)  
**SHORE HARDNESS** D70 (Standard: ASTM D2240-05)  
**WATER ABSORPTION** 0.63% (Standard: ASTM D570-98)  
**THERMAL EXPANSION** 33.12 x10<sup>-6</sup> (Standard: ASTM D696-08)  
**SLIP RESISTANCE** R11 (Standard: DIN 51130:2014)









## > CLADDING

DESIGNER SERIES  
COMPOSITE

# The Rome Collection

## Unparalleled beauty

These parallel battens result in unparalleled beauty. This collection is an alluring alternative for creating a contemporary facade on homes, commercial offices, or any space.

The **Rome Collection** not only lives up to its name for its strength and endurance but also for the weight of its reputation. After all, we are talking about the cradle of civilization and its never-ending promise of glory.





# The Rome Collection

## COLOR CHOICES



All colors shown are for reference only.

## TECHNICAL DETAILS

- > Capped using ultra-high-strength materials 1" x 7" (26 x 176mm)
- > Comes in 16-foot boards
- > Increased scratch resistance
- > Protected against mildew and stains

**DENSITY** 1.3g/m<sup>3</sup> (Standard: ASTM D792-13 Method B)  
**TENSILE STRENGTH** 24.9Mpa (Standard: ASTM D638-14)  
**FLEXURAL STRENGTH** 34.5Mp (Standard: ASTM D790-10)  
**FLEXURAL MODULUS** 3510Mpa (Standard: ASTM D790-10)  
**IMPACT STRENGTH** 88J/m (Standard: ASTM D4812-11)  
**SHORE HARDNESS** D70 (Standard: ASTM D2240-05)  
**WATER ABSORPTION** 0.63% (Standard: ASTM D570-98)  
**THERMAL EXPANSION** 33.12 x10<sup>-6</sup> (Standard: ASTM D696-08)  
**SLIP RESISTANCE** R11 (Standard: DIN 51130:2014)

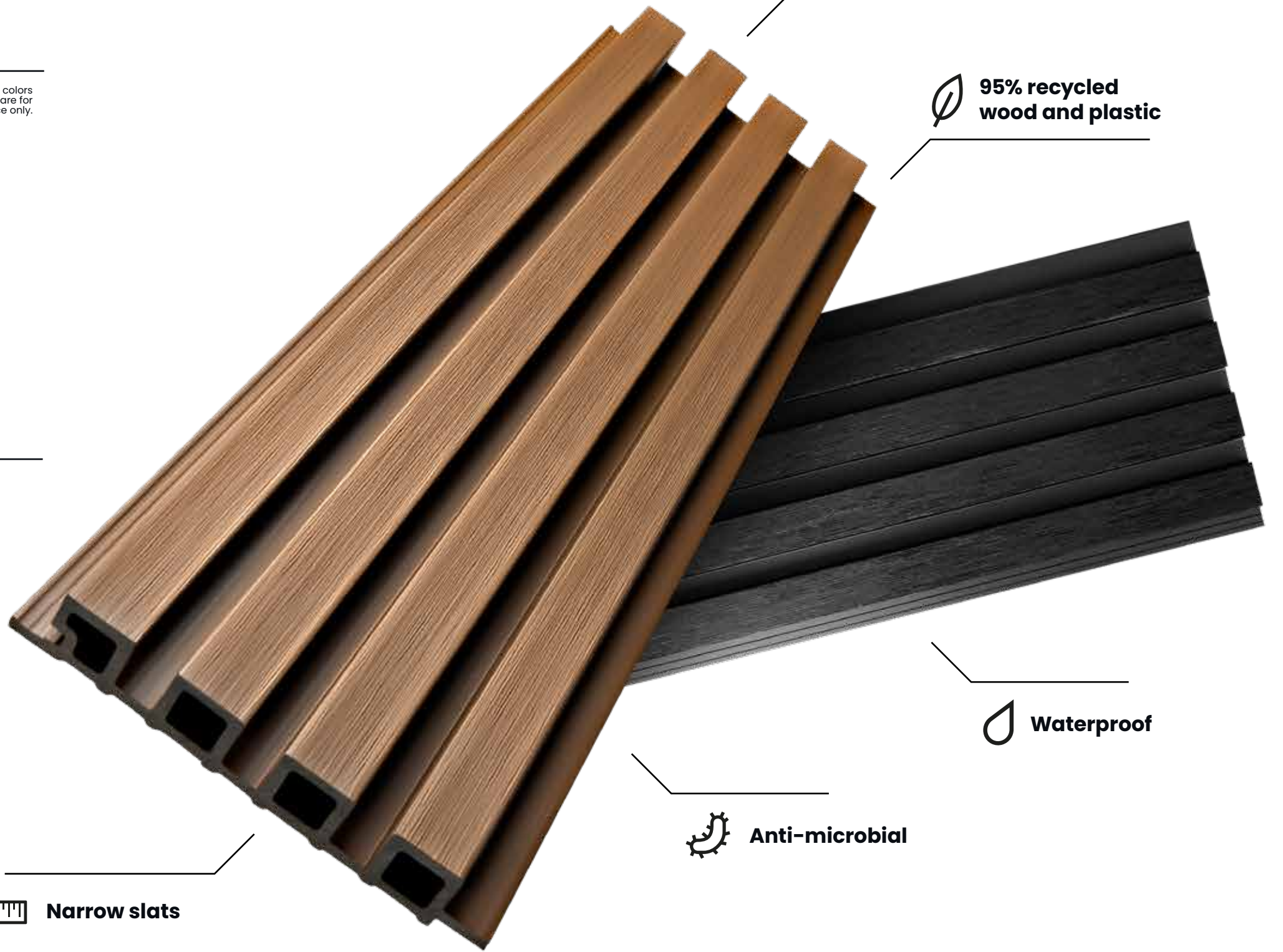
 **Narrow slats**

 **Color variation on every board**

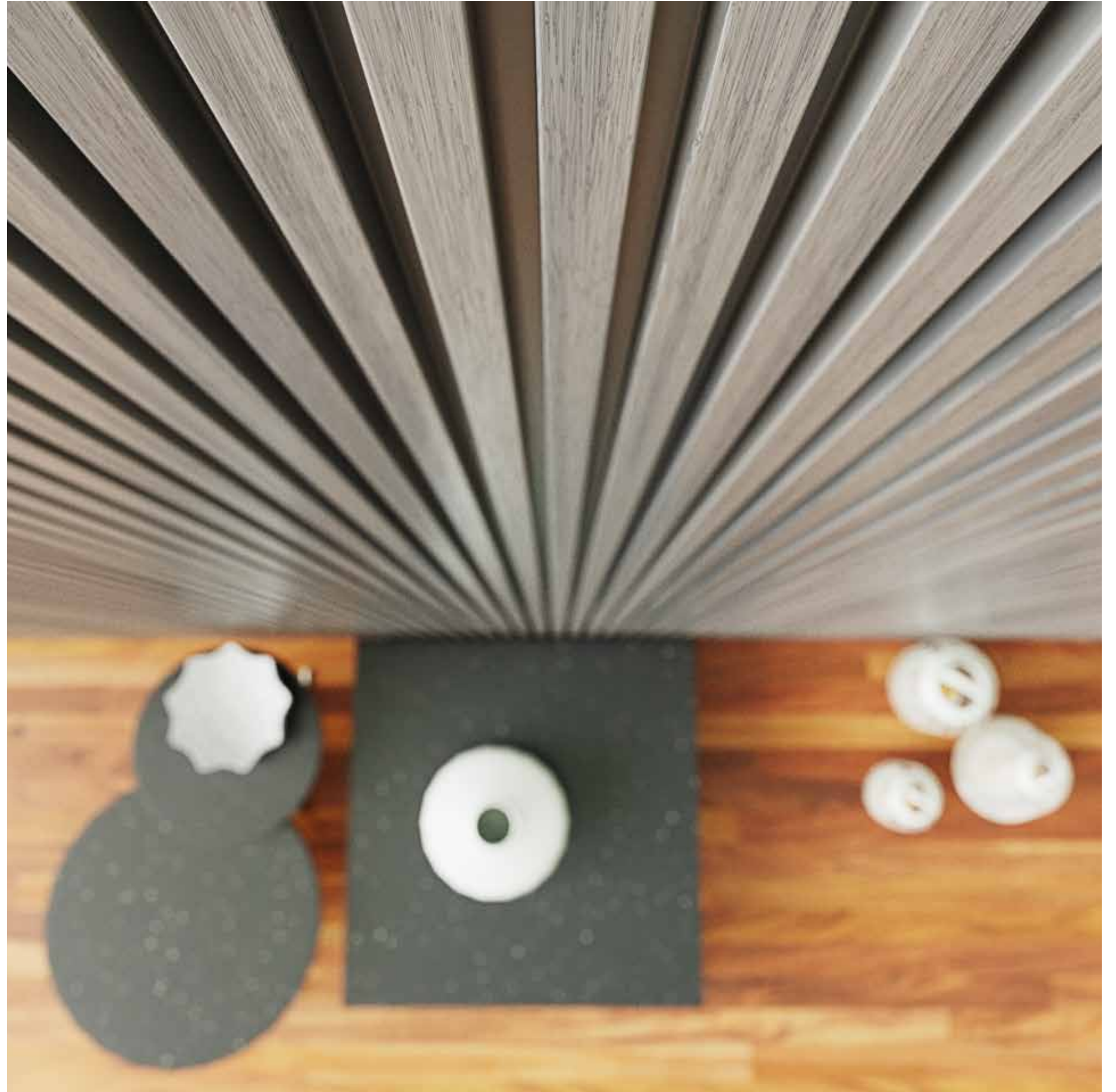
 **95% recycled wood and plastic**

 **Waterproof**

 **Anti-microbial**









**norx<sup>®</sup>**

Dive into the  
**NORX<sup>®</sup> XPERIENCE**  
at **NORX.US**

