



© 2021 Norx LLC

THE NEXT GENERATION OF COMPOSITE

Norx[®] Composite Cladding Installation Guide

The **London** & **Rome** Collections





READ THIS SECTION BEFORE YOU BEGIN!

This installation guide will direct you through the process of installing your **Norx**[®] product. These installation methods are recommended by **Norx**[®], but they may not cover every installation situation you may encounter. Since each installation is unique in its performance requirements, the installation method used is the sole responsibility of the installer. **Norx**[®] recommends that all designs be reviewed by a licensed architect, engineer, or local building official before installation. Make sure your plans meet federal, state and local building codes before you begin the installation.

SAFETY

Wearing the appropriate safety equipment is necessary when you deal with any type of construction project. **Norx**[®] strongly suggests wearing the following safety equipment: gloves, a respiratory protection, long sleeves, pants, and safety glasses. This is not a exhaustive list. Other safety equipment may be necessary.

PLANNING AHEAD

To determine how much **Norx**[®] cladding material you will need, start by calculating the square footage of your wall by multiplying the length by the width. When calculating the amount of cladding you will need, we recommend that you add roughly 10% to the total square footage to account for a scrap factor. The layout for your cladding should be planned out before starting installation to ensure the best results. Building codes and zoning ordinances generally apply to permanent structures, meaning anything that is anchored to the ground or attached to the house may be subject to those regulations. In turn, nearly every kind of cladding project requires permits and inspections from a local building department.

EXPANSION AND CONTRACTION

Norx[®] cladding planks will experience expansion and contraction with changes in temperature. Expansion and contraction are most significant where extreme temperature changes occur. Changes in length are most likely to occur during the installation process, and should be taken into account if working in extreme temperatures.



READ THIS SECTION BEFORE YOU BEGIN!

ENVIRONMENT

You need a clean, smooth, flat, and strong surface to install **Norx**[®] products. Make sure your plans meet local building codes before installing any type of cladding.

TOOLS

The tools you need for this installation are listed below:



Cordless drive



Level



Tape Measure



Saw

NOTE

1. The trims we provide are not indispensable. You may use your own trims according to your preferences.
2. Joists must be installed before installing cladding in order to ensure safety.
3. Pre-drill the cladding boards in the exact location where the screws should be affixed using your cordless drive.
4. Screws are required for every connection. We recommend you acquire an ample amount of screws in the event you need more during the installation.



THE NEXT GENERATION OF COMPOSITE



READ THIS SECTION BEFORE YOU BEGIN!

CLIPS



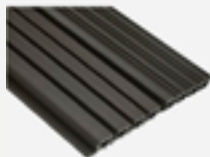
Fixing Clip

Code: CLAD-SSS11
CLAD-SSS13

Size: 1 1/8" x 1"
(28 x 25mm)

Depth of slot:
1/2" / 7/16" (13mm / 11mm)

PROFILES



Norx® Cladding

Model:

Code: LON-CLAD
Size: 1" x 8" x 16'
(26mm x 219 mm x 487cm)
Suitable clip: CLAD-SSS13



Norx® Cladding

Model:

Code: ROM-CLAD
Size: 1" x 7" x 16'
(26mm x 176 mm x 487cm)
Suitable clip: CLAD-SSS11

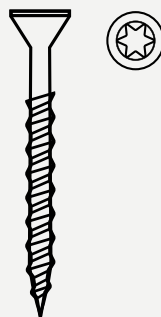
TRIM



Norx® trim

Model:
Code: TRIM
Size: 2" x 2" x 16'
(50mm x 50mm x 487cm)

SCREW



Code: CLAD-SSC1

Note: You can determind your own trim according to your preference.

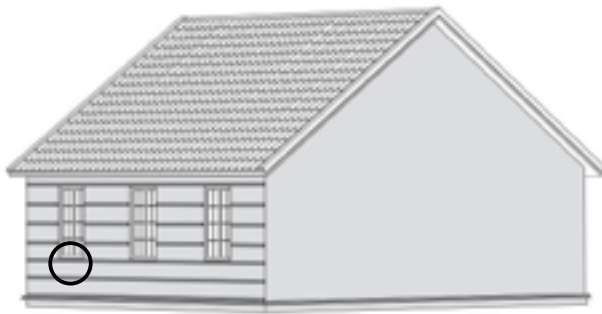


> VERTICAL VERSION

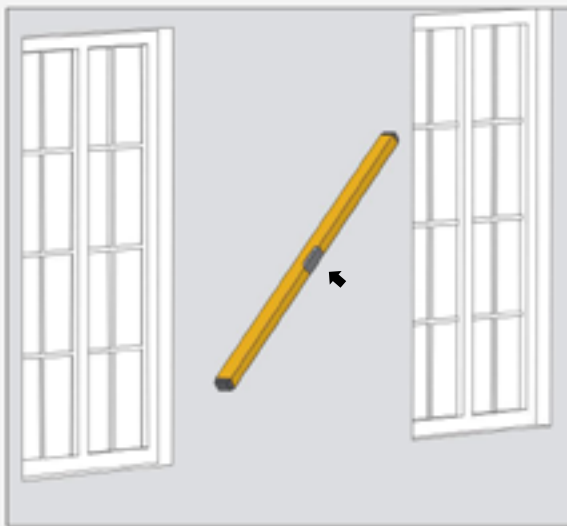
NOTE: LON-CLAD shown below.



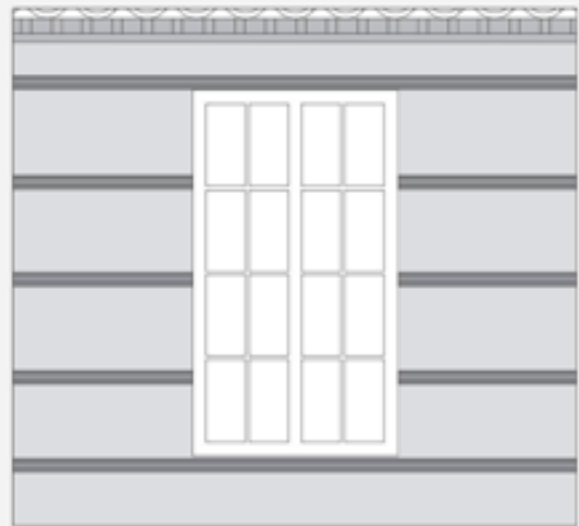
- 1** Install joists at 15 3/4" (400mm) on center. Fix the joists with expansion screws.



Note



- Make sure the wall is flat. (You can also use a laser level.)



- Making sure that there is a joist next to the side of the window (2" (50mm) is recommended).

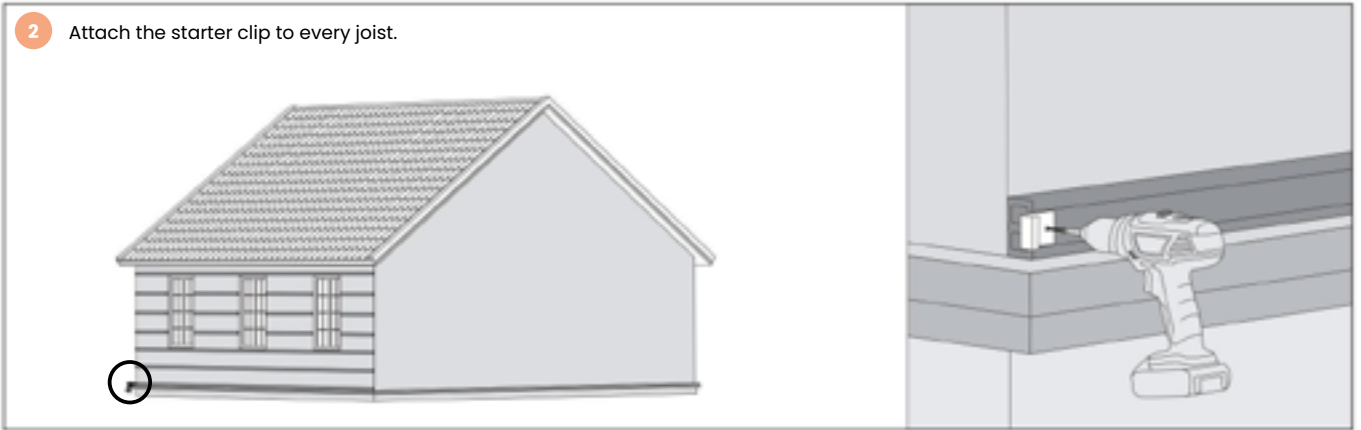
Note: Before fixing by screws, pre-drill at the exact location for screws with cordless drive.

> VERTICAL VERSION

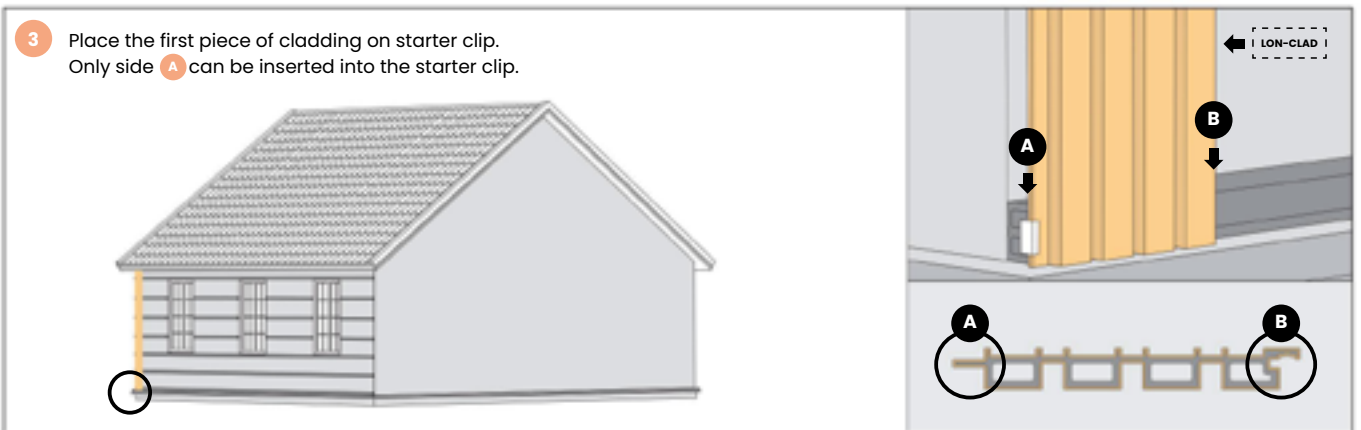
NOTE: LON-CLAD shown below.



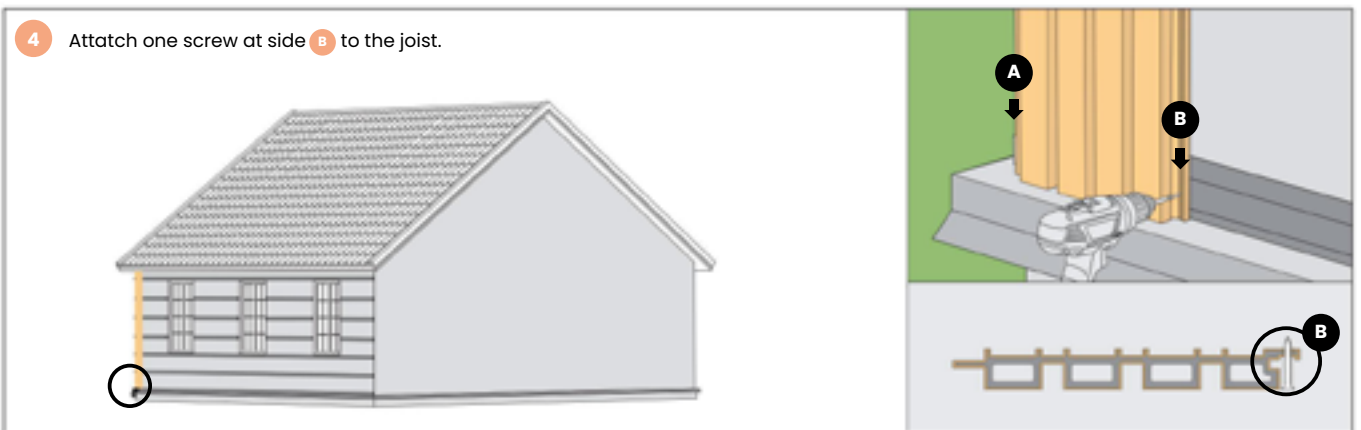
- 2** Attach the starter clip to every joist.



- 3** Place the first piece of cladding on starter clip.
Only side **A** can be inserted into the starter clip.



- 4** Attach one screw at side **B** to the joist.

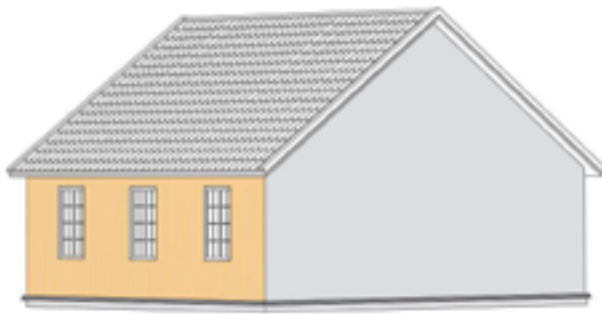


> VERTICAL VERSION

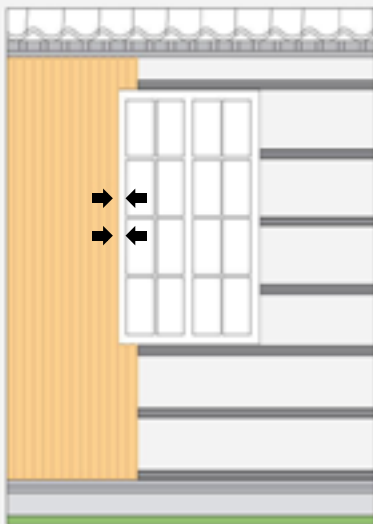
NOTE: LON-CLAD shown below.



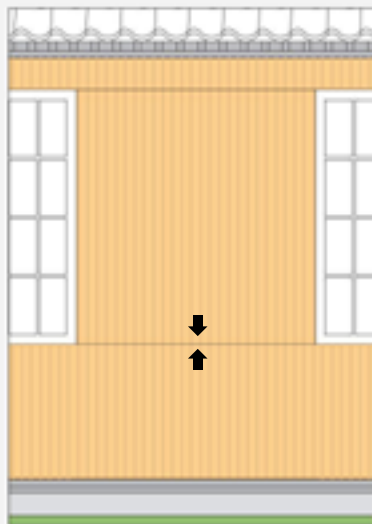
5 Continue installation in accordance with steps 3 & 4.



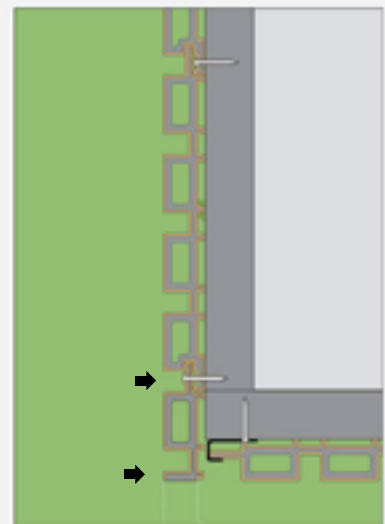
Note



- Cut the cladding in accordance with the size of any existing framing.



- Leave a gap of at least 1/8" (3mm) between board junctions.



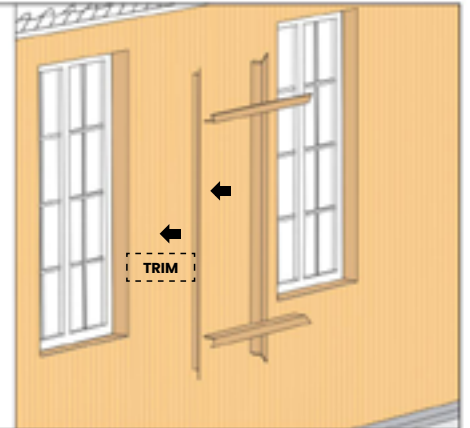
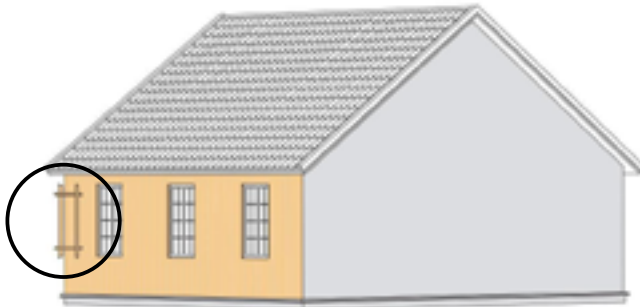
- Measure and remove any excess cladding to maintain a uniform look of the corners.

➤ VERTICAL VERSION

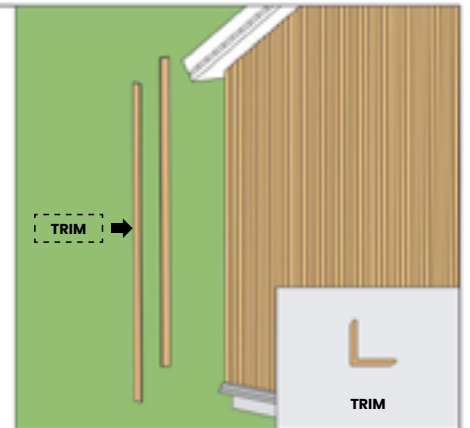
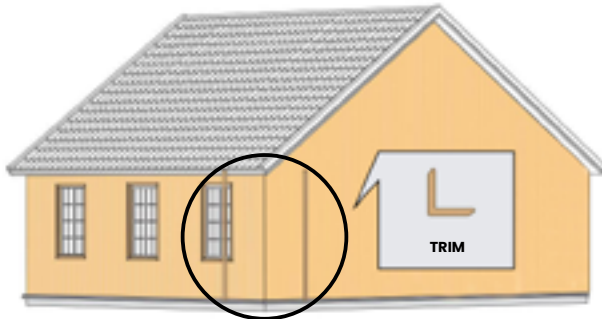


NOTE: LON-CLAD shown below.

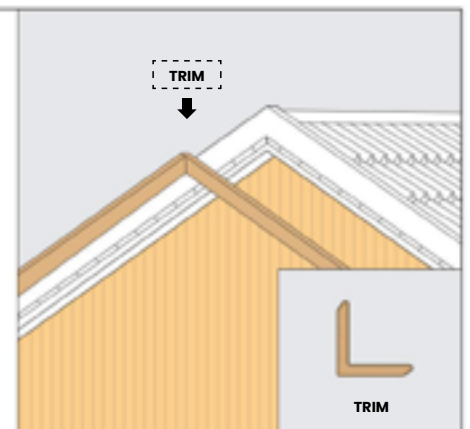
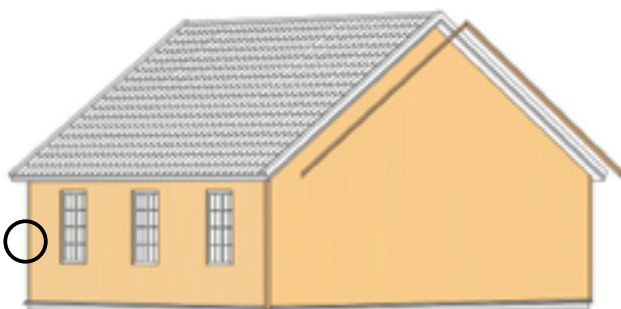
- 6** Install L trim to cover the gap between window frame and cladding. Attach using stainless steel screws.



- 7** Install the L trim on any external corners. Attach using stainless steel screws.



- 8** Install L trim on the edges of the roof, and attach using screws.



> VERTICAL VERSION

NOTE: LON-CLAD shown below.



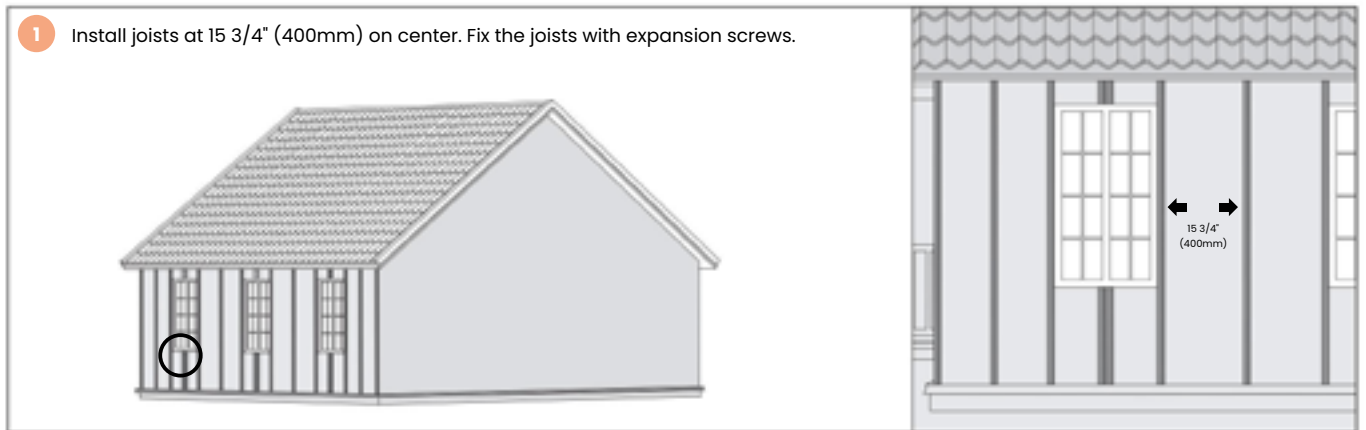
Note



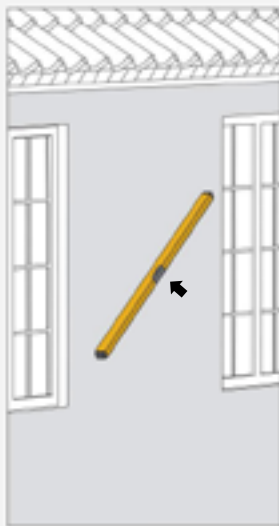
- Installing trim is not necessary for inner corners.

➤ HORIZONTAL VERSION

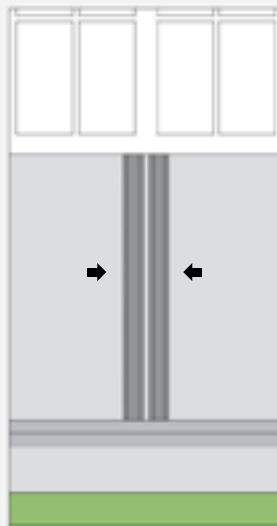
NOTE: LON-CLAD shown below.



Note



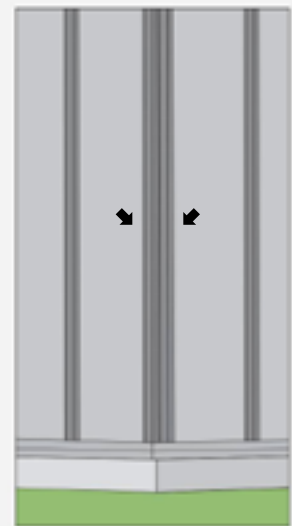
- Make sure the wall is flat. (You can also use a laser level.)



- When installing cladding around a window, you need to use two joists.



- Make sure that there is a joist next to the side of the window. (2" (50mm) is recommended).



- Double joist for the corner. You can choose wooden joist and aluminum joist.

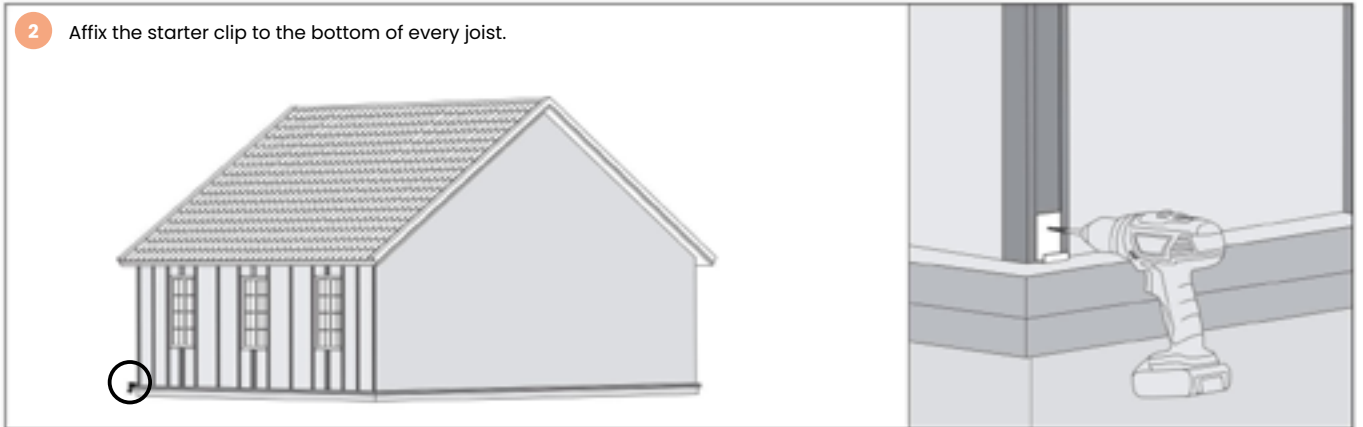
Note: Before fixing by screws, pre-drill at the exact location for screws with cordless drive.

> HORIZONTAL VERSION

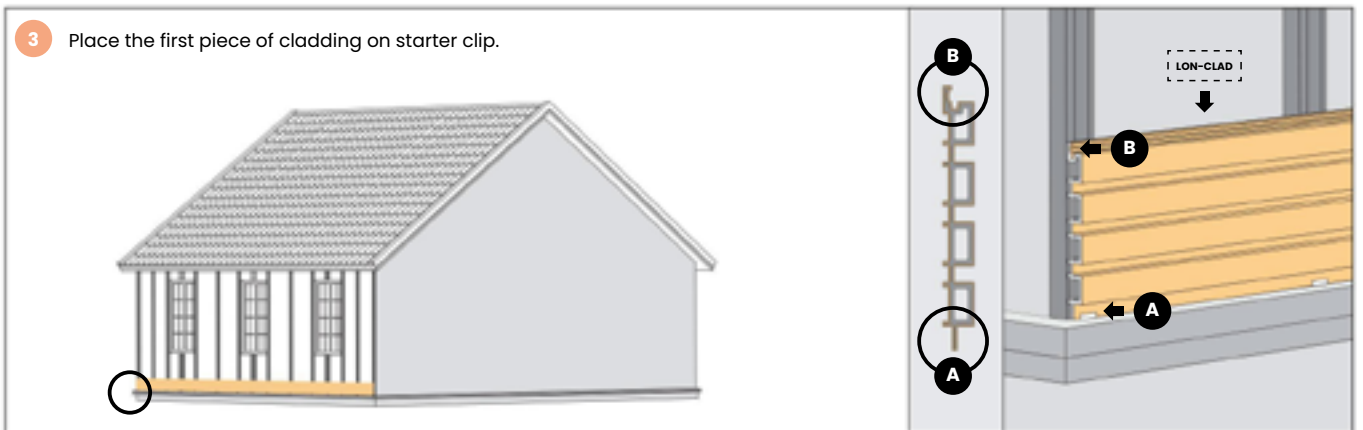
NOTE: LON-CLAD shown below.



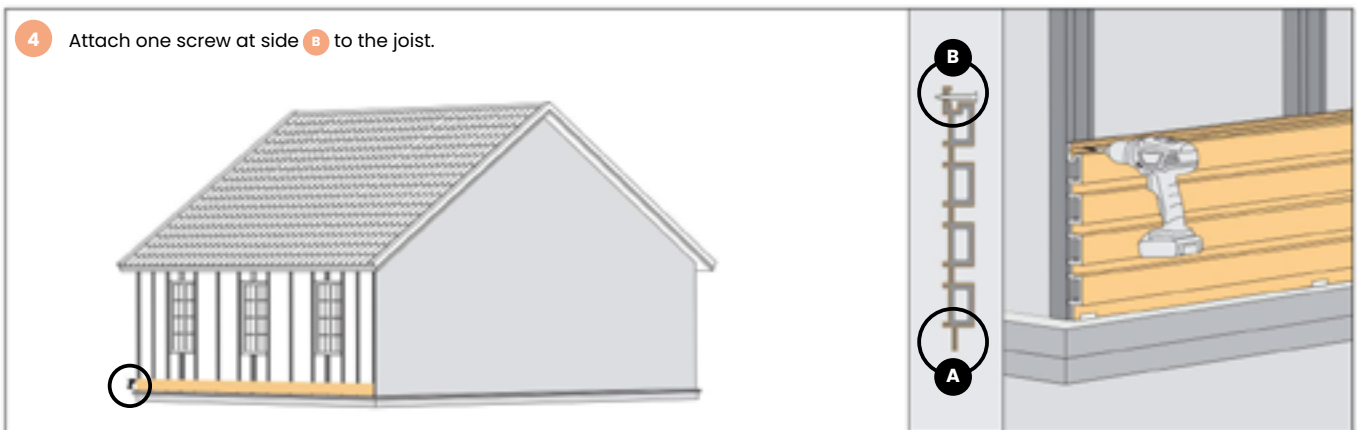
- 2** Affix the starter clip to the bottom of every joist.



- 3** Place the first piece of cladding on starter clip.



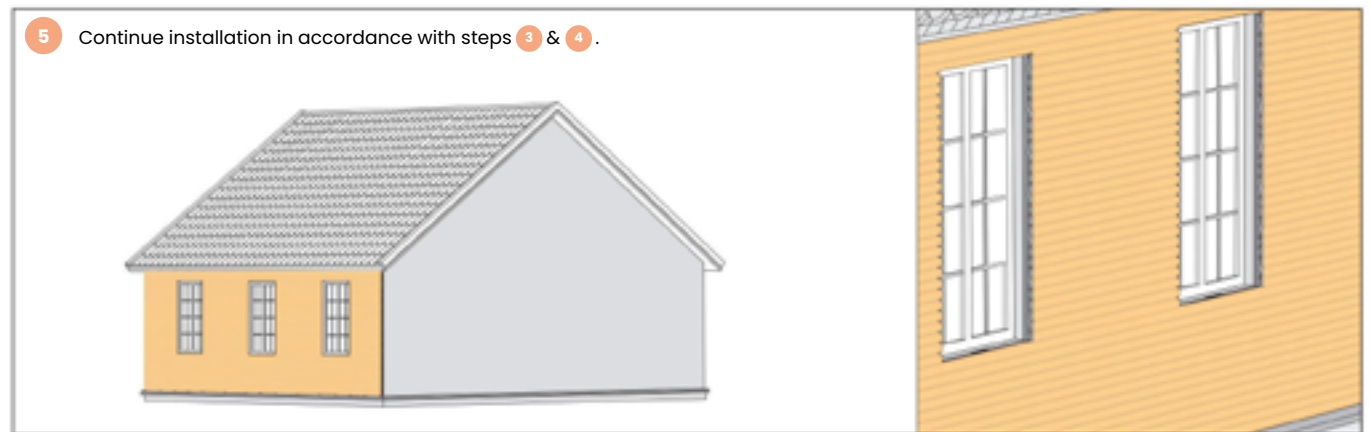
- 4** Attach one screw at side **B** to the joist.



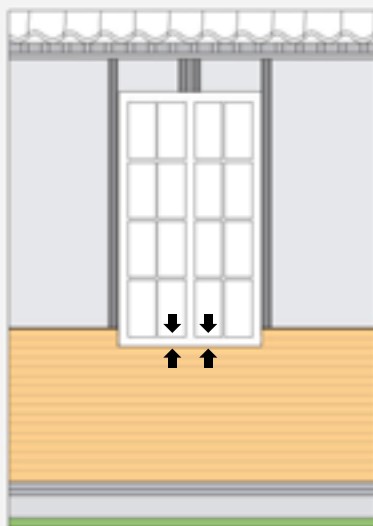
> HORIZONTAL VERSION



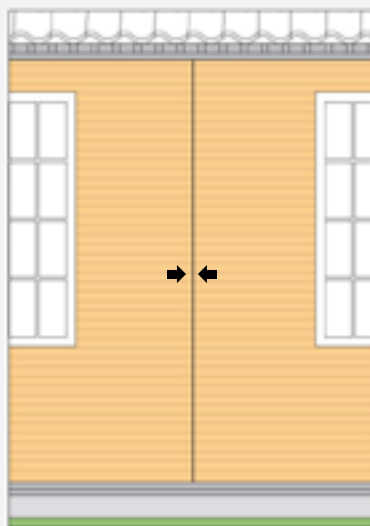
NOTE: LON-CLAD shown below.



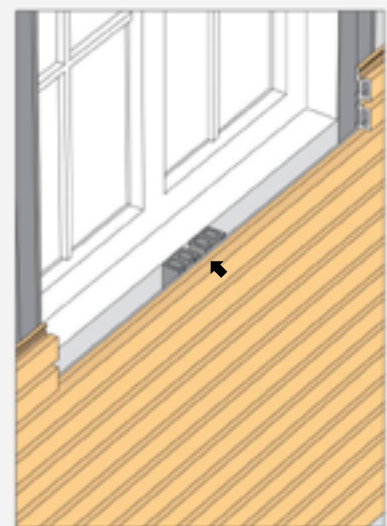
Note



- Cut the cladding in accordance with the size of any existing framing.



- Leave a gap at least 1/8" (3mm) between the board junctions.



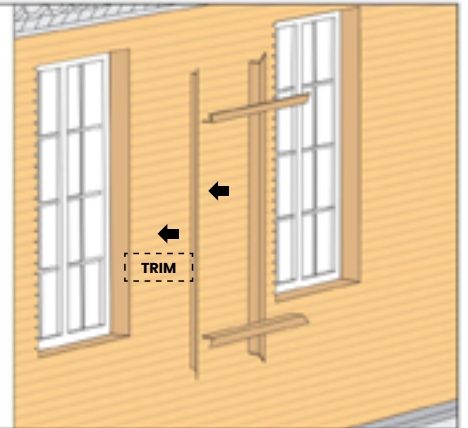
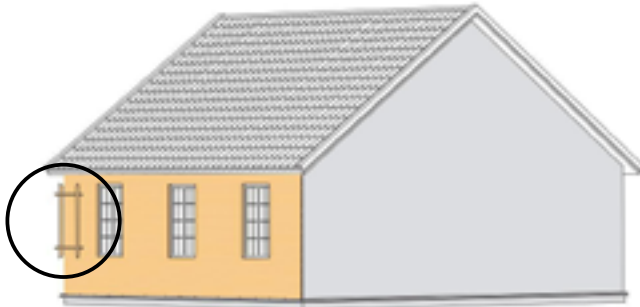
- Insert a small piece of wood between the joist and the cladding on the top and bottom of the window.

➤ HORIZONTAL VERSION

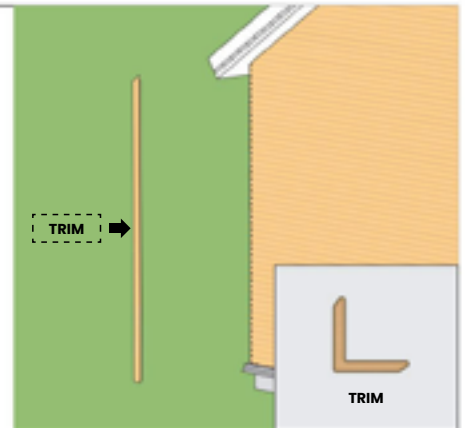
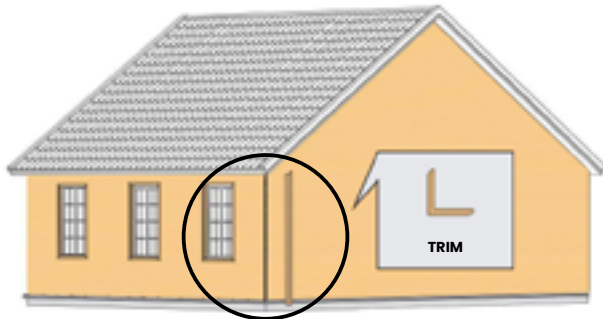
NOTE: LON-CLAD shown below.



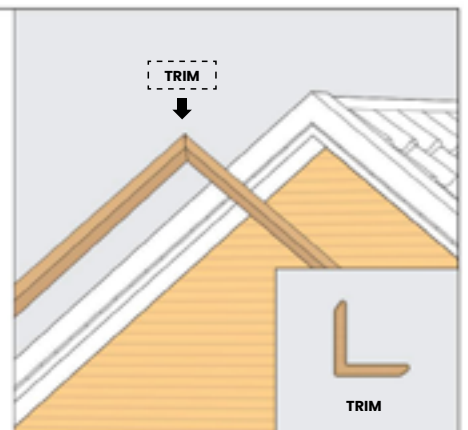
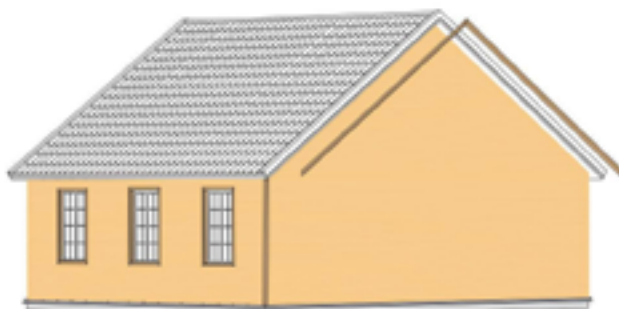
- 6** Install L trim to cover the gap between window frame and cladding. Attach using stainless steel screws.



- 7** Install the L trim on any external corners. Attach using stainless steel screws.



- 8** Install L trim on the edges of the roof, and attach using screws.



> HORIZONTAL VERSION

NOTE: LON-CLAD shown below.



LON-CLAD

Note



- Installing trim is not necessary for inner corners.



THE NEXT GENERATION OF COMPOSITE

Dive into the
NORX® XPERIENCE.
at **NORX.US**

